

**Life Courses in Comparable Perspective:  
Similarities and Differences of  
Predictors and Outcomes Between  
Countries, Times and Populations**

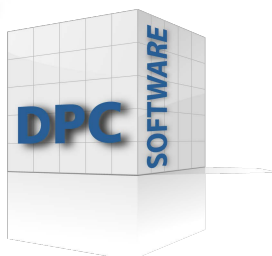
**25 - 27 September 2019  
Potsdam, Germany**



**Sponsored by**



Universitätsgesellschaft Potsdam e.V. -  
Vereinigung der Freunde, Förderer und Ehemaligen



**CONFERENCE  
PROGRAMME  
#SLLS2019**

## Useful Information

### Venue Address

University of Potsdam  
Campus Griebnitzsee  
14482 Potsdam,  
Germany

### Telephone

0049 331 9770

### Contacts

Wolfgang Lauterbach (wlauterb@uni-potsdam.de)  
Johanna Turgetto (turgetto@uni-potsdam.de)




### Venue Wi-Fi

Individual passwords to access the network will be distributed during registration.

### Rooms

Registration: Foyer 1  
Conference Welcome: H 05 (Via Foyer 2)  
Keynote Presentations: H 05 (Via Foyer 2), H 04  
Symposium and Individual Paper Presentations: H 04, 12, 13, 14, 15, 16, 17, 21, 22  
Coffee Breaks: Foyer 2  
Lunch: Mensa (Via Foyer 1)  
SLLS Annual General Meeting: H 04  
Poster Session and Welcome Drinks: Foyers 1, 2  
Conference Dinner: Arcona Hotel, Zeppelinstraße 136, 14471 Potsdam

### Name Badges/Lanyards

-  lanyards: SLLS Executive Committee Members / Conference Organisers
-  lanyards: Ordinary Delegates
-  lanyards: Early Career Delegates

### Certificates of Attendance

If you would like a CoA, contact Cat Westlake (cwestlake@slls.org.uk)



#SLLS2019

## Welcome from the President



A warm welcome to the 9<sup>th</sup> SLLS conference in Potsdam, Germany.

Our 2019 conference is hosted by the Department of Education at the University of Potsdam. The University of Potsdam is a relatively young University with a strong international orientation. We are delighted to contribute in a small way to the ongoing international exchanges and activities. Our local hosts Wolfgang Lauterbach and Johanna Turgetto, in collaboration with Cat Westlake and the SLLS Conference Committee, are fully committed to making this conference an enjoyable and informative scientific meeting.

The scope and number of submitted symposia and paper abstracts received from life course researchers worldwide, clearly reflects the rising importance of SLLS Conferences in particular, and the SLLS as a Society in general over the last years. We are proud to be able to present a truly interdisciplinary and international conference programme with contributions from well-known experts as well as talented early-career researchers. Given the high participation rate in this conference, you can expect many opportunities to meet interesting people and to have exciting scientific exchanges.

The conference programme covers a full spectrum of important themes of longitudinal and life course research: a focus on comparative longitudinal research, in particular regarding physical, psychological and social developmental processes and functioning within and across the life course and across different socio-cultural contexts. Topics span the period from conception to old age; providing evidence from cohort and panel studies, as well as record linkage; addressing issues of household and income dynamics; intergenerational transfers and returns to learning; social-biological interactions; methodological innovations, 'mixed', and comparative methods; and the interface between research, policy and practice.

Highlights of the programme are the three keynote presentations by Professor Marlis Buchmann from the University of Zurich, Switzerland; Professor Chin-Chun Yi from the Academia Sinica, Taiwan; and Professor Karl Ulrich Mayer, Director Emeritus of the Max Planck Institute for Human Development, Germany.

We will also be presenting two awards at the conference, the LIVES Best Paper Award 2019 to an early career researcher, generously supported by the Swiss National Centre of Competence in Research LIVES (NCCR LIVES), and the SLLS 2019 John Bynner Distinguished Scholar Award to someone at a later stage in their career. It seems fitting that a society supporting life course research is supporting careers over the life span in this way.

Finally, I would like to thank all delegates for their continued interest and support of the SLLS, making our Society a lively and important platform for longitudinal and life course research.

Looking forward to meeting you all over the next three days.

Ingrid Schoon  
President, Society for Longitudinal and Life Course Studies (SLLS)  
Email: [i.schoon@ucl.ac.uk](mailto:i.schoon@ucl.ac.uk)

## Herzlich Willkommen, Welcome, Karşılama, Bienvenido, Benvenuto, Bienvenu, Yōkoso, 歡迎 and Welkom... to the University of Potsdam and the SLLS 2019!



We - the Department of Education at the Faculty of Humanities, University of Potsdam - welcome you to the 9<sup>th</sup> conference of the Society for Longitudinal and Life Course Studies (SLLS). This year's conference covers the topic of "Life Courses in Comparable Perspective: Similarities and Differences of Predictors and Outcomes Between Countries, Times and Populations" - a topic well-chosen and reflecting not only the interests of the SLLS, but also of the University and this Faculty.



The University of Potsdam, founded in 1991, is a young university - younger than 30 years. Looking at international rankings, (e.g. 'Times Higher Education') in 2019, the university ranks 24<sup>th</sup> of universities under 50 years of age. Out of a total of 350 universities from 60 countries, the University of Potsdam ranks among the top 25, comparable to Antwerp University and the University of South Australia.

Potsdam University has a strong international orientation. It offers the most international study programs, compared to other German universities, and organises a wide number of international events. For example, the Faculty of Humanities and the Department of Education hosted last year's EARLI conference, this year the SLLS', and in 2020, the GEPF conference.

Our faculty has around 3,500 students in two departments - Cognitive Sciences and the Educational Sciences. Research focuses on action and behavior, language, health, popular and professional sports, education, school and classroom, lifelong learning, heterogeneity and inclusion, and we also have centers for psychotherapy and speech therapy, as well as a university outpatient clinic, and a medical examination center of the German Olympic Sports Confederation

This year's orientation of the annual SLLS meeting focuses on international research efforts that compare and reflect nations, populations, cohorts, sub-groups and history. Individual research findings gain importance in their specificity and consistency with other results, too. In times when national perspectives are becoming stronger, it is important to show that the presented comparisons and findings are essential to understand global developments. They are essential for the further development and shaping of international longitudinal research. They are another important step towards international visibility of the SLLS and the international network within the SLLS.

We welcome you for four days from the 24 - 27 September 2019, starting with six pre-conference workshops. Have a great conference, enjoy Potsdam and Berlin, and take home many, hopefully new insights!

Wolfgang Lauterbach and Johanna Turgetto  
Department of Education, Faculty of Humanities, University of Potsdam  
Email: [wlauterb@uni-potsdam.de](mailto:wlauterb@uni-potsdam.de)  
[turgetto@uni-potsdam.de](mailto:turgetto@uni-potsdam.de)



# DAY 1 WEDNESDAY 25th SEPTEMBER 2019

---

08:00 – 09:00 REGISTRATION FOYER 1

09:00 – 09:30 CONFERENCE WELCOME AND OPENING SPEECHES ROOM H 05

Ingrid Schoon, SLLS President, UCL Institute of Education, UK  
Wolfgang Lauterbach, University of Potsdam, Germany  
Robert Seckler, University Vice-President, Potsdam, Germany  
Dario Spini, University of Lausanne, Switzerland  
Award Presentation for 'LIVES 2019 Best Paper by a Young Scholar'

09:30 – 10:30 KEYNOTE PRESENTATION ROOM H 05

**The Interplay of Structure and Agency in Child and Adolescent Development: Comparative Considerations in Life Course Perspective**

Presenter: Marlis Buchmann, University of Zurich, Switzerland  
Chair: Wolfgang Lauterbach, University of Potsdam, Germany

10:30 – 11:00 COFFEE BREAK FOYER 2

## PARALLEL SESSION 1

---

**1A** SYMPOSIUM ROOM 12

11:00 – 12:30 **Life Course Centre Australia - Social Disadvantage and the Educational Pathway:**

**School Readiness, Educational Achievement and Post School Destinations**

Convenor and Chair: Janeen Baxter, University of Queensland, Australia

**Determinants of School Readiness in Australian Children**

Presenter: Daniel Christensen, University of Western Australia, Australia  
Co-authors: Catherine Taylor, Steven R. Zubrick, University of Western Australia, Australia

**Academic Achievement of Children in Same-Sex-Parented and Different-Sex-Parented Families**

Presenter: Jan Kabatek, University of Melbourne, Australia  
Co-author: Francisco Perales, University of Queensland, Australia

**Association of Household Income Patterns and Child's Academic Achievement: An Analysis from the Longitudinal Study of Australian Children**

Presenter: Nam Tran, University of Queensland, Australia  
Co-author: Mark Western, University of Queensland, Australia

**Academic Aptitude, Socio-Economic Background and Post-School Destinations of Australian Students**

Presenter: Wojtek Tomaszewski, University of Queensland, Australia  
Co-authors: Matthias Kubler, University of Queensland, Australia; Cain Polidano, Chris Ryan, University of Melbourne, Australia; Buly Cardak, La Trobe University, Australia

**1B** SYMPOSIUM ROOM H 04

11:00 – 12:30 **Social-to-Biological Research Over the Life Course: What Insight is Brought Through Different Types of Biological Data?**

Convenor and Chair: Michelle Kelly-Irving, INSERM, France

**A Life Course Approach to Explore the Biological Embedding of Socioeconomic Position Through Inflammatory Markers**

Presenter: Raphaële Castagné, INSERM-Université Toulouse III Paul Sabatier, France

**Gene-by-Environment Interaction Research and Social Inequalities in Health**

Presenter: Borge Schmidt, University of Duisburg-Essen, Germany

**Embodiment of What? Conceptualizing the “Social” in “Social-to-Biological” Research**

Presenter: Ruth Müller, Technical University of Munich, Germany

**Discussants:** Melanie Bartley, University College London, UK; Meena Kumari, University of Essex, UK; Amanda Hughes, University of Bristol, UK

**1C**

11:00 – 12:30

**SYMPOSIUM ROOM 13****Standard Routes and Detours: Recent Research on Social Inequalities in School-to-Work Transitions**

Convenor and Chair: Brigitte Schels, Friedrich-Alexander-University of Erlangen-Nuremberg, Germany

**(How) Did You Waste Your Time? A Sequence Analysis of Transitions from Secondary to Higher Education in Germany**

Presenter: Nicole Tieben, University of Tübingen, Germany

Co-author: Judith Offerhaus, University of Cologne, Germany

**Are Low-Skill Young People Increasingly Useless, and Are Boys the Losers Among Them?**

Presenter: Thomas Lorentzen, University of Bergen, Norway

Co-authors: Hans-Tore Hansen, University of Bergen, Norway; Kristoffer Chelsom Vogt, University of Bergen, Norway

**Alternative Pathways from School to Work of German Youth with a Low or Intermediate Educational Level**

Presenter: Juliane Achatz, Institute for Employment Research, Germany

Co-authors: Brigitte Schels, Kerstin Jahn, Institute for Employment Research, Germany

**Is Any Participation in Education Better Than NEET?**

Presenter: Christian Brzinsky-Fay, Berlin Social Science Center, Germany

**Discussant:** Juliane Achatz, Institute for Employment Research, Germany

**1D**

11:00 – 12:30

**SYMPOSIUM ROOM 14****Policy and Health Outcomes**

Convenor and Chair: Aisling Murray, Economic and Social Research Institute, Ireland

**Political Economy and Death in the American States**

Presenter: Jennifer Karas-Montez, Syracuse University, USA

Co-authors: Julene Cooney, Zeyd Koytak, Syracuse University, USA

**Pediatric Overdoses in the United States, 2000-2016: Comparisons, Contextual Factors, Policy Effects**

Presenter: Mike Vuolo, The Ohio State University, USA

Co-authors: Brian C. Kelly, Purdue University, USA; Laura Frizzell, The Ohio State University, USA

**Do Welfare Regimes Moderate Cumulative Dis/Advantage in the Life Course?**

Presenter: Stefan Sieber, University of Geneva, Switzerland

Co-authors: Boris Cheval, Dan Orsholits, Bernadette W. Van der Linden, Idris Guessous, Matthias Kliegel, Delphine Courvoisier, Claudine Burton-Jeangros, Stéphane Cullati, University of Geneva, Switzerland

**China's Economic Reform and Chinese Life Course**

Presenter: Xiaochun Qiao, Peking University, China

**1E****11:00 – 12:30****PAPER SESSION: GENDER ROLES ROOM 15***Chair: Liat Raz-Yurovich, Hebrew University of Jerusalem, Israel***A Woman's Work is Never Done! (By A Man): Gender Divisions in Children's Housework in Ireland***Presenter: Caoimhe O'Reilly, Economic and Social Research Institute, Ireland**Co-author: Mike Quayle, University of Limerick, Ireland***Dual Career Pursuit: The Pathway to Parental Life Satisfaction?***Presenter: Laura Langner, University of Oxford, UK***Fathers' Job Flexibility and Mothers' Return to Employment***Presenter: Sandra Buchler, University of Frankfurt, Germany**Co-author: Katharina Lutz, University of Bremen, Germany***Do More Egalitarian Men Experience Less Union Dissolution?***Presenter: Liat Raz-Yurovich, Hebrew University of Jerusalem, Israel**Co-authors: Barbara S. Okun, Matanel Ben-Avi, Hebrew University of Jerusalem, Israel***1F****11:00 – 12:30****PAPER SESSION: METHODS - RECRUITMENT AND RESPONSE RATE ROOM 16***Chair: Elizabeth Cooksey, The Ohio State University, USA***Response Rates After Longer Breaks in Interviewing***Presenter: Roman Auriga, Leibniz Institute for Educational Trajectories, Germany***The Effect of Survey Mode on Panel Recruitment Bias***Presenter: Joseph Sakshaug, Institute for Employment Research (IAB), Germany**Co-authors: Sebastian Huelle, Alexandra Schmucker, IAB, Germany; Stefan Liebig, German Institute for Economic Research (DIW), Germany***Comparing and Integrating Prospective and Retrospective Reports on Childhood Health Status***Presenter: Narayan Sastry, University of Michigan, USA**Co-author: Robert Bozick, RAND Corporation, USA***Better Governance, Better Access: Practising Responsible Data Sharing in the METADAC Governance Infrastructure***Presenter: Stephanie Roberts, Newcastle University, UK**Co-authors: Madeleine Murtagh, Joel Minion, Newcastle University, UK***1G****11:00 – 12:30****PAPER SESSION: EDUCATION AND EMPLOYMENT TRANSITIONS ROOM 17***Chair: Lesley Andres, University of British Columbia, Canada***Habitus, Career Patterns and the Reproduction of Social Inequality***Presenter: Markus Zielonka, Leibniz Institute for Educational Trajectories, Germany**Co-authors: Frank Goßmann, Michael Bayer, Leibniz Institute for Educational Trajectories, Germany***Coming of Age in Europe: Generational Patterns of the Transition into Adulthood***Presenter: Anne Berngruber, German Youth Institute, Germany**Co-author: Arne Bethmann, Munich Center for the Economics of Aging, Germany***Societal Change and Educational Trajectories of Women and Men Born Between 1919 and 1986 in (West) Germany***Presenter: Rolf Becker, University of Bern, Switzerland**Co-author: Karl Ulrich Mayer, Max Planck Institute for Human Development, Germany*

**Life Transitions for Emerging Adults: A Cross Cohort Comparison***Presenter: Ellen Thompson, University College London, UK**Co-author: Morag Henderson, University College London, UK***Measuring Educational Participation and Attainment Over the Life Course***Presenter: Lesley Andres, University of British Columbia, Canada**Co-author: Janine Jongbloed, University of Bourgogne, France***1H****11:00 – 12:30****PAPER SESSION: PRE-SCHOOL AND PRIMARY SCHOOL ROOM 21***Chair: Jennifer Symonds, University College Dublin, Ireland***The Impact of Early Collective Childcare Attendance on Early Language Development: Evidence from the French Birth Cohort Survey***Presenter: Anne Solaz, French Institute for Demographic Studies (Ined), France**Co-authors: Lidia Panico, Ined, France; Lawrence Berger, University of Wisconsin, USA***A Developmental Perspective on Kindergarten Instructional Policies and Child Academic Growth from Kindergarten Through Third Grade***Presenter: Jane Waldfogel, Columbia University, USA**Co-author: Yi Wang, Columbia University, USA***How Do Gaps in Attainment Change Over Childhood? Longitudinal Evidence from Ethiopia, India, Peru and Vietnam***Presenter: Milo Vandemoortele, London School of Economics, UK***The Transition to Primary School: How Family Background and Childcare Experiences Influence Children's Skills on School Entry***Presenter: Adriana Duta, University of Edinburgh, UK**Co-author: Emer Smyth, Economic and Social Research Institute, Ireland***Children's School Lives: Ireland's First National Cohort Longitudinal Study of Primary Schooling***Presenter: Jennifer Symonds, University College Dublin, Ireland**Co-author: Abigail Cahoon, University College Dublin, Ireland***1I****11:00 – 12:30****PAPER SESSION: FAMILIES AT RISK ROOM 22***Chair: Elisabeth Schroeder-Butterfill, University of Southampton, UK***Measuring the Quality of the Home Environment of Young Children in Uruguay: Socioeconomic Gradients in the HOME Inventory***Presenter: Christian Berón, Ministry of Social Development, Uruguay**Co-authors: Giorgina Garibotto, Ministry of Social Development, Uruguay;**Florencia Lopez Boo, Mavaris Cubides Mateus, Rita Sorio, Inter-American Development Bank, Uruguay***Natural Disasters and Violence Against Mothers and Children in the Philippines: Can a Conditional Cash Transfer Program Be Protective?***Presenter: Ben Edwards, Australian National University, Australia**Co-author: Matthew Gray, Australian National University, Australia***Comparing Vulnerability and Social Network Responses Across Lifecourse Stages, Cultures and Socio-economic Strata in Indonesia***Presenter: Elisabeth Schroeder-Butterfill, University of Southampton, UK**Co-authors: Members of the ARC Team on 'Economic, Health and Social Vulnerabilities Across the Lifecourse in Indonesia'***12:30 – 13:30 LUNCH MENSAS VIA FOYER 1****12:30 – 13:30 LUNCH MEETING: SLLS Global Representatives ROOM 14 BUILDING 6**

## PARALLEL SESSION 2

2A

13:30 – 15:00

### SYMPOSIUM ROOM 12

#### Patterns and Impacts of Childhood Adversity Across Populations, Settings and Contexts

Convenors and Chairs: Naomi Priest, Meredith O'Connor, The Australian National University (ANU), Australia

#### Inequalities in Childhood Adversity from Birth to 11 Years in Australia

Presenter: Meredith O'Connor, ANU, Australia

Co-authors: Naomi Priest, ANU, Australia; Natalie Slopen, University of Maryland, USA;

Laia Becares, Cathie Marsh Institute for Social Research, University of Manchester, UK;

David Burgner, Murdoch Children's Research Institute, Australia; David R. Williams, Harvard University, USA

#### The Clustering of Adverse Childhood Experiences in the Avon Longitudinal Study of Parents and Children: Are Gender and Poverty Important?

Presenter: Rebecca Lacey, University College London, UK

Co-authors: Laura Howe, University of Bristol, UK; Michelle Kelly-Irving, INSERM, Université

Toulouse III Paul-Sabatier, France; Mel Bartley, Yvonne Kelly, University College London, UK

#### Discrimination and Inflammatory Outcomes in the School Context

Presenter: Naomi Priest, ANU, Australia

Co-authors: Mandy Truong, Shiao Chong, ANU, Australia; Anne Kavanagh, University of

Melbourne, Australia; Yin Paradies, Deakin University, Australia; Kevin Dunn, Oishee Alam,

Western Sydney University, Australia; David Burgner, Murdoch Children's Research Institute, Australia

#### A Critique of the Adverse Childhood Experiences Framework in Epidemiology and Public Health: Uses and Misuses

Presenter: Michelle Kelly-Irving, INSERM, Université Toulouse III Paul Sabatier, France

Co-author: Cyrille Delpierre, LEASP, INSERM/Université Toulouse III Paul Sabatier, France

### UNDERSTANDING SOCIETY – THE UK HOUSEHOLD LONGITUDINAL STUDY

Understanding Society is a world-renowned household panel study that provides vital evidence for scientists and policymakers on people's lives in the UK. The Study covers people of all ages allowing us to understand the experiences of the whole population over time. We follow everyone in a household so the links between generations, couples and siblings across the life-course can be explored. You can find out more about Understanding Society at the following SLLS sessions:

#### DAY ONE:

- Do More Egalitarian Men Experience Less Union Dissolution?

Liat Raz-Yurovich, Hebrew University of Jerusalem (1E, 11.00)

#### DAY TWO:

- Socioeconomic Differentials in Physical Activity by Age and Cohort: Findings from Six UK Longitudinal Studies,

Meg Fluaharty, UCL Institute of Education (4C, 9.00)

- The Effect of Parental Wealth on Children's Outcomes in Early Adulthood,

Eleni Karagiannaki, London School of Economics (5D, 11.00)

- Biosocial Research Across Datasets: The Example of Allostatic Load, and its Composition by Age, Across Seven Datasets,

Meena Kumari, University of Essex (5B, 11.00)

- The Value of Biomarker Data in Social Sciences,

Michaela Benzval, University of Essex (5B, 11.00)

- Missing Data in Biosocial Research,

Tarani Chandola, University of Manchester (5B, 11.00)

- Similarities and Differences in Social Class Inequalities in School Outcomes,

Vernon Gayle, University of Edinburgh (6I, 15.00)

#### DAY THREE:

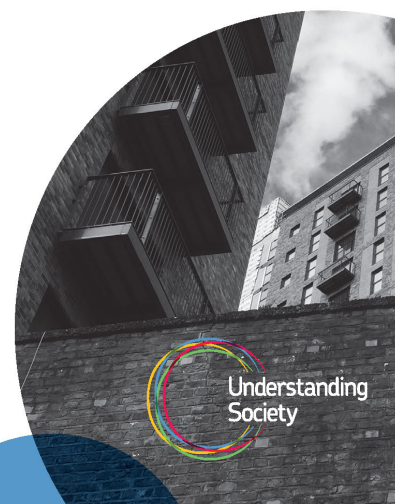
- For Better, But Maybe Not for Worse! The Effects of Health on the Quality of Household Relationships,

Harish Kumar, Loughborough University (8B, 12.30)

- Labor Market Deregulation, Fixed-Term-Employment and Family Formation in the Life-Course: A Comparison of Germany and the UK,

Christian Schmitt, Rostock University (8E, 12.30)

[www.understandingsociety.ac.uk](http://www.understandingsociety.ac.uk)



**2B****13:30 – 15:00****SYMPOSIUM ROOM 13****Resilience in Health and Wellbeing Across the Life Course***Convenor and Chair: Bram Vanhoutte, University of Manchester, UK***Politicising the Resilience Construct: The Shaping of Resilient Racialized and Gendered Identities***Presenter: Maria Haarmans, University of Manchester, UK**Co-authors: James Nazroo, Bram Vanhoutte, University of Manchester, UK***Biosocial Predictors of Resilience to Adverse Childhood Experiences***Presenter: Stephanie Cahill, University of Manchester, UK***Resilience and Living Well Beyond Cancer: The Relationship Between Emotional Support and Quality of Life***Presenter: Patty Doran, University of Manchester, UK**Co-authors: Sorrel Burden, Nick Shryane, University of Manchester, UK***Bouncing Back or Keep Calm and Carry On? An Exploration of Varieties of Resilience in Ageing***Presenter: Bram Vanhoutte, University of Manchester, UK**Discussant: David Blane, Imperial College London, UK***2C****13:30 – 15:00****SYMPOSIUM ROOM H 04****The Sequence Analysis Association (SAA)***Convenor and Chair: Matthias Studer, NCCR-LIVES, University of Geneva, Switzerland***Trajectory Description: Visualisation and Indicators***Presenter: Christian Brzinsky-Fay, WZB Berlin, Germany***Migration Trajectories of Filipino and Indonesian Domestic Workers in Hong Kong***Presenter: Tim F. Liao, University of Illinois, USA***Beyond Sequence Typologies: Extracting and Selecting Relevant Properties of Sequence***Presenter: Matthias Studer, NCCR-LIVES, University of Geneva, Switzerland**Co-author: Danilo Bolano, NCCR-LIVES, University of Lausanne, Switzerland***Apples and Oranges? Comparing Life Course Typologies Across Countries***Presenter: Anette Fasang, Humbolt University, Germany**Co-authors: Selcuk Bedük, University of Essex, UK; Zafer Büyükececi, University of Bamberg Germany; Aleksi Karhula, University of Turku, Finland; Marc A. Scott, New York University, USA***Enhancing Fuzzy Clusters' Interpretation Through Visualization***Presenter: Raffaella Piccarreta, Dondena Centre for Research on Social Dynamics and Public Policy, Bocconi University, Italy**Co-author: Emanuela Struffolino, WZB Berlin Social Science Center, Germany***2D****13:30 – 15:00****PAPER SESSION: PARENTING AND CHILD OUTCOMES ROOM 14***Chair: Diana Warren, Australian Institute of Family Studies, Australia***Parental Divorce and Its Effects on Internalizing and Externalizing Problem Behaviours in Children***Presenter: Lena Weigel, Bielefeld University, Germany**Co-author: Bastian Mönkediek, Bielefeld University, Germany***The Involvement of Grandparents Across Childhood and Their Role in the Development of Prosocial Behaviour***Presenter: Jennifer Hampton, Cardiff University, UK**Co-author: Christopher Taylor, Cardiff University, UK*



**Mother's Interaction Behavior in Families with Risk and Stress Factors: Applying a Longitudinal Person-Centered Perspective on Data of Starting Cohort 1 of the NEPS**

Presenter: Manja Attig, Leibniz Institute for Educational Trajectories, Germany  
Co-author: Gwendolin Blossfeld, University of Bamberg, Germany

**The Housing Experiences of Australian Children**

Presenter: Diana Warren, Australian Institute of Family Studies, Australia

## 2E

13:30 – 15:00

**PAPER SESSION: GENDERED LIFE COURSES ROOM 15**

Chair: Hans-Peter Blossfeld, University of Bamberg, Germany

**Gendered Barriers and Benefits: A Two-Cohort Study of Life Course Trajectories Among Skilled Workers in Gender-Segregated Occupations in Norway**

Presenter: Kristoffer Chelsom Vogt, University of Bergen, Norway  
Co-author: Thomas Lorentzen, University of Bergen, Norway

**Gender Specific Differences in the Effects of Social Origin on Income Development: The Case of Germany**

Presenter: Hartwig Hümme, University of Potsdam, Germany

**Changes in the Returns to Women's and Men's Education at Entry into the Labour Market in West Germany, 1945–2008**

Presenter: Hans-Peter Blossfeld, University of Bamberg, Germany  
Co-author: Rolf Becker, University of Bern, Switzerland

## 2F

13:30 – 15:00

**PAPER SESSION: RISING ASPIRATIONS ROOM 16**

Chair: Andrea Hasl, University of Potsdam, Germany

**Rising Expectations: Educational Attainment Across Three Generations in the Context of Social and Economic Change**

Presenter: Lisa Serbin, Concordia University, Canada  
Co-authors: Daniel J. Dickson, Dale M. Stack, Concordia University, Canada;  
Marie-Hélène Véronneau, University du Quebec a Montreal, Canada

**Self-Esteem, Economic Self-Efficacy, and Status Attainment: Evidence from a Panel Study of Three Generations**

Presenter: Monica Kirkpatrick Johnson, Washington State University, USA  
Co-authors: Kaspar Burger, Jeylan T. Mortimer, University of Minnesota, USA

**Reversing the Academic Drift: Raising Academic Attainment and Building College Going Aspirations Through a Longitudinal Widening Participation Programme**

Presenter: Katriona O'Sullivan, Maynooth University, Ireland  
Co-author: Cliona Hannon, Trinity College Dublin, Ireland

**Does the "American Dream" Still Hold? Historical Changes in How Adolescents' Socioeconomic Status, IQ, and GPA Are Related to Adult Educational and Occupational Success**

Presenter: Andrea Hasl, University of Potsdam, Germany  
Co-authors: Julia Kretschmann, Dirk Richter, Martin Brunner, University of Potsdam, Germany;  
Manuel Voelke, Humboldt University of Berlin, Germany

**2G****13:30 – 15:00****PAPER SESSION: VOCATIONAL LEARNING ROOM 17***Chair: Konrad Turek, Interdisciplinary Demographic Institute, Netherlands***Adolescent's Vocational Orientation: Vocational Aspiration and the Local Apprenticeship Market***Presenter: Christina A. Zeichner, Leibniz Institute for Educational Trajectories, Germany**Co-author: Melanie Fischer, Friedrich-Alexander-Universität Erlangen-Nürnberg, Germany***Transitions into Higher Vocational Education in Switzerland: The Role of Intrinsic and Extrinsic Work Values, Expectations and Rewards***Presenter: Ines Trede, Swiss Federal Institute for Vocational Education and Training (SFIVET), Switzerland**Co-author: Grønning Miriam, Swiss Federal Institute for Vocational Education and Training (SFIVET), Switzerland***Long-Lasting Effects on the Motivation for Continuing Education in the Middle Adulthood: Impacts of School-Related Learning Experiences in Different Educational and Occupational Contexts***Presenter: Matthias Sandau, University of Potsdam, Germany***Comparing Path Dependency in Lifecourse Trajectories: Training Participation in Older Age***Presenter: Konrad Turek, Interdisciplinary Demographic Institute, Netherlands**Co-author: Kene Henkens, Interdisciplinary Demographic Institute, Netherlands***2H****13:30 – 15:00****PAPER SESSION: LEARNING ROOM 21***Chair: Desmond O'Mahony, Economic and Social Research Institute, Ireland***How Children Develop Mathematical Skills Over Time: A Latent Transition Analysis (LTA)***Presenter: Abbie Cahoon, University College Dublin, Ireland**Co-authors: Victoria Simms, Ulster University, UK; Camilla Gilmore, Loughborough University, UK***Early Mother-Child Interactions and the Development of Mathematical Competencies: Can Differences Between Girls and Boys Be Explained by Different Levels of Literacy and Numeracy Stimulation?***Presenter: Loreen Beier, Otto-Friedrich-University of Bamberg, Germany**Co-author: Hans-Peter Blossfeld, Otto-Friedrich-University of Bamberg, Germany***The Social Stratification of Sex Differences in Academic Achievement and Behavior Problems***Presenter: Michael Kühhirt, University of Cologne, Germany**Co-authors: Ibrahim Demirer, University of Cologne, Germany; Markus Klein, University of Strathclyde, UK***Gendered Computer Usage and Academic Performance Across Three waves of Growing Up in Ireland***Presenter: Desmond O'Mahony, Economic and Social Research Institute, Ireland***2I****13:30 – 15:00****PAPER SESSION: FERTILITY AND BIRTH ROOM 22***Chair: Sara Kalucza, University of Queensland, Australia***Maternal Qualification and Child Birth-Weight: Findings from the Office for National Statistic's Longitudinal Study***Presenter: Jitka Pikhartova, University College London, UK**Co-authors: Rachel Stuchbury, Nicola Shelton, University College London, UK***The Persistence of Developmental Challenges Among Infants Born Preterm: Results from the 'All Our Families' Cohort***Presenter: Suzanne Tough, University of Calgary, Canada**Co-authors: Jessica-Lynn Walsh, Erin Hetherington, Muci Wu, University of Calgary, Canada; Sheila McDonald, Alberta Health Services, Canada*

**Association Between Gestational Age and Autism Spectrum Disorder and Social Communication Difficulties in Childhood: A Population-Based Study**

Presenter: Mariko Hosozawa, University College London, UK

Co-authors: Noriko Cable, Yvonne Kelly, Amanda Sacker, University College London, UK

**Heterogeneous Causal Effects of Early Fertility Timing on Mid-Life Mental Health: Evidence from the 1970 British Cohort Study**

Presenter: Sara Kalucza, University of Queensland, Australia

Co-authors: Martin O'Flaherty, University of Queensland, Australia; Joshua Bon, Queensland University of Technology

15:00 – 15:30 COFFEE BREAK FOYER 2

## PARALLEL SESSION 3

3A

SYMPOSIUM ROOM H 04

15:30 – 17:00

**Mechanisms Underpinning Child Development: Early Findings from the SEED Programme**

Convenor and Chair: James Law, Newcastle University, UK

**Toddler's Language and Social Competence: The Impact of Socioeconomic Status and Parenting Behavior**

Presenter: Wei Huang, Leibniz-Institute for Educational Trajectories, Germany

Co-authors: Manja Attig, Jutta von Maurice, Sabine Weinert, Leibniz-Institute for Educational Trajectories, Germany

**Maternal Education, Inequality, and Children's Vocabulary Outcomes from Three European Longitudinal Studies**

Presenter: Helen Wareham, Newcastle University, UK

Co-authors: James Law, Wei Huang, L. Labuschagne, Newcastle University, UK

**The Role of Behaviour in Mediating the Relationship Between Home Learning Environment/Parental Mental Health and Structural and Pragmatic Language Outcomes in Middle Childhood**

Presenter: James Law, Newcastle University, UK

Co-authors: Robert Rush, Nathalie Tamayo Martinez, Cristina McKean, Newcastle University, UK

**The Relationship Between Trajectories of Behavior, Emotional and Attention Problems Across Childhood and Primary School Attainment**

Presenter: Nathalie Tamayo, Erasmus University Medical Centre, Netherlands

Co-authors: Henning Tiemeier, Frank Verhulst, Jan van der Ende, Pauline Jansen, Erasmus University Medical Centre, Netherlands

**The Association of Slight-Mild Hearing Loss with Behavior and School Performance in Children**

Presenter: Lisanne J.E. Labuschagne, The Generation R Study Group, Erasmus University Medical Center, Netherlands

Co-authors: Carlijn M.P. le Clercq, Pauline W. Jansen, Marie-Christine J.P. Franken, Robert J. Baatenburg de Jong, Maartje P.C.M. Luijk, Marc P. van der Schroeff, The Generation R Study Group, Erasmus University Medical Center, Netherlands

**Discussant:** Ingrid Schoon, University College London, UK

**3B****15:30 – 17:00****SYMPOSIUM ROOM 12****Polygenic Scores in Health and Social Research: Theory, Methodology, Practice**

Convenors and Chairs: Tim Morris, University of Bristol, UK; Darya Gaysina, University of Sussex, UK

**The Polygenic Scores Approach in Interdisciplinary Health and Social Research**

Presenter: Darya Gaysina, University of Sussex, UK

**Methodological Challenges with Polygenic Scores: Disentangling Genes from Environment**

Presenter: Tim Morris, University of Bristol, UK

**Using Polygenic Scores to Investigate the Causal Role of Common Health Conditions in Childhood and Adolescence on Educational Attainment**

Presenter: Amanda Hughes, University of Bristol, UK

**3C****15:30 – 17:00****SYMPOSIUM ROOM 13****Combining and Comparing Different Types of Data: Experiences from the 'Transitions from Education to Employment' Survey**

Convenor and Chair: Andrés Gomensoro, University of Bern, Switzerland

**Ethnic Choice Effects at the Transition to Upper Secondary Education**

Presenter: David Glauser, University of Bern, Switzerland

Co-author: Rolf Becker, University of Bern, Switzerland

**Rationing VET in the Knowledge Society? How Swiss Youths Get Selected into VET Programmes with Poor Schooling and What It Does to Their Careers**

Presenter: Thomas Meyer, University of Bern, Switzerland

Co-author: Stefan Sacchi, University of Bern, Switzerland

**Studying Educational Pathways Inequalities: Between Trajectories and Narrations**

Presenter: Andrés Gomensoro, University of Bern, Switzerland

**3D****15:30 – 17:00****SYMPOSIUM ROOM 14****Private Schools in England in the 20th Century**

Convenor and Chair: Morag Henderson, UCL Institute of Education, UK

**The Income and Wealth Concentration of Private School Attendance in Britain**

Presenter: Golo Henseke, UCL Institute of Education, UK

Co-authors: Jake Anders, Francis Green, Morag Henderson, UCL Institute of Education, UK

**Determinants of Private School Participation: All About the Money?**

Presenter: Jake Anders, UCL Institute of Education, UK

Co-authors: Francis Green, Morag Henderson, Golo Henseke, UCL Institute of Education, UK

**Private Schooling, Subject Choice and Upper Secondary Academic Attainment in England**

Presenter: Morag Henderson, UCL Institute of Education, UK

Co-authors: Jake Anders, Francis Green, Golo Henseke, UCL Institute of Education, UK

**Private Benefits? External Benefits? Outcomes of Private Schooling in 21st Century Britain**

Presenter: Francis Green, UCL Institute of Education, UK

Co-authors: Jake Anders, Morag Henderson, Golo Henseke, UCL Institute of Education, UK

**Discussant:** Alice Sullivan, UCL Institute of Education, UK

**3E****15:30 – 17:00****PAPER SESSION: PREDICTING EDUCATIONAL ATTAINMENT ROOM 15***Chair: Shana Pribesh, Old Dominion University, USA***Stratification and Gender Differences in Germany and Britain: A Comparison***Presenter: Marie Wohlbrandt, University of Potsdam, Germany***What Role for the 'Long Arm of Childhood' in Social Gradients? An International Comparison of High-Income Contexts***Presenter: Steven Haas, Pennsylvania State University, USA**Co-authors: Zhangjun Zhou, Pennsylvania State University, USA; Katsuya Oi, Northern Arizona University, USA***Adolescent Health Problems and Educational Mobility***Presenter: Janne Mikkonen, University of Helsinki, Finland**Co-authors: Hanna Remes, Heta Moustgaard, Pekka Martikainen, University of Helsinki, Finland***Residential Mobility and Educational Outcomes: Testing Competing Theories Across Three Countries***Presenter: Shana Pribesh, Old Dominion University, USA**Co-authors: Yuanyuan Yue, Old Dominion University, USA; Mikaela Dufur, Jonathan Jarvis, Elizabeth Sigler, Sadie Slighting, John Garbero, Amanda Coffelt, Brigham Young University, USA***3F****15:30 – 17:00****PAPER SESSION: YOUTH TRANSITIONS ROOM 16***Chair: Jessica Abell, University College London, UK***Trajectories to Adulthood in China Among the Post 80s: Degree, Job, and Love***Presenter: Mengni Chen, Catholic University of Louvain, Belgium**Co-author: Ester Lucia Rizzi, Catholic University of Louvain, Belgium***Analysis of the Labor and Educational Trajectories of Children Who Entered the Labor Market During the Periods of Economic Crisis (1994 and 2009) in Mexico***Presenter: Julio Martínez, The College of Mexico, Mexico City***China's Economic Reform and Chinese Life Course***Presenter: Xiaochun Qiao, Peking University, China***The Development of Life Satisfaction, Career Satisfaction, and Career Engagement During the Third Decade***Presenter: Katja Upadyaya, University of Helsinki, Finland**Co-author: Katariina Salmela-Aro, University of Helsinki, Finland***3G****15:30 – 17:00****PAPER SESSION: TROUBLED YOUTH ROOM 17***Chair: Wei Xun, University College London, UK***Experience of Maternal and Paternal Adversities in Childhood as Determinants of Self-Harm in Adolescence and Young Adulthood***Presenter: Joonas Pitkänen, University of Helsinki, Finland**Co-authors: Hanna Remes, Mikko Aaltonen, Pekka Martikainen, University of Helsinki, Finland***Family Structure Change and Suicidal Ideation Among South Korean Youth***Presenter: Jonathan Jarvis, Brigham Young University, USA**Co-authors: John A. Garbero, Amy Read, Mikaela J. Dufur, Brigham Young University, USA; Shana Pribesh, Old Dominion University, USA***Childhood Adversity Within Adolescent Friendship Groups: Implications for Subsequent Substance Use Disorders***Presenter: Lauren Bishop, Stockholm University, Sweden*

**Adverse Childhood Experiences and Adult Inflammation: Single Adversity, Cumulative Risk and Latent Class Approaches**

*Presenter: Rebecca Lacey, University College London, UK*

*Co-authors: Snehal Pinto Pereira, Leah Li, University College London, UK; Andrea Danese, Kings College London, UK*

**Mortality in Young People Not in Education, Employment or Training (NEET) in England and Wales Using the Longitudinal Study**

*Presenter: Wei Xun, University College London, UK*

*Co-authors: Nicola Shelton, Stephen Jivraj, Rebecca Lacy, University College London, UK*

**3H**

**15:30 – 17:00**

**PAPER SESSION: INFLUENCES ON EDUCATIONAL ATTAINMENT ROOM 21**

*Chair: Emer Smyth, Economic and Social Research Institute (ESRI), Ireland*

**School Absenteeism and Academic Achievement: Is Missing-Out on School More Detrimental to Students from Lower Socioeconomic Backgrounds?**

*Presenter: Shadrach Dare, University of Strathclyde, UK*

*Co-authors: Edward Sosu, Markus Klein, University of Strathclyde, UK*

**An Evolution of School Absentees and School Grading Policy: An Analysis Using Prefectural Panel Data**

*Presenter: Shun Ikemoto, Keio University, Japan*

*Co-author: Hideo Akabayashi, Keio University, Japan*

**Do Schoolmates' Personalities Matter in Students' Individual Lives?**

*Presenter: Richard Göllner, University of Tübingen, Germany*

*Co-authors: Ulrich Trautwein, University of Tübingen, Germany; Brent Roberts, University of Illinois at Urbana-Champaign, USA*

**Inequality in Learning from Early Childhood to Adolescence: Longitudinal Evidence from Ethiopia**

*Presenter: Janice Kim, University of Cambridge, UK*

**School Social Mix and Lower Secondary Education Performance: Are There Cumulative Effects?**

*Presenter: Emer Smyth, Economic and Social Research Institute (ESRI), Ireland*

**3I**

**15:30 – 17:00**

**PAPER SESSION: METHODS ROOM 22**

*Chair: Harvey Goldstein, University of Bristol, UK*

**Extending the Oaxaca-Blinder Decomposition Approach to Longitudinal Data Analyses: A Practical Approach**

*Presenter: Hannes Kröger, German Institute for Economic Research (DIW), Germany*

*Co-author: Jörg Hartmann, University of Göttingen, Germany*

**Optimal Developmental Trajectory Group Analyses: Which Parameters Should (Not) Be Constrained to Accurately Estimate Growth Mixture Models?**

*Presenter: Jitske Sijbrandij, University of Groningen, Netherlands*

*Co-authors: Tialda Hoekstra, Josue Almansa, Ute Bültmann, Sijmen Reijneveld, University of Groningen, Netherlands; Margot Peeters, Utrecht University, Netherlands*

**Are Scores on Cognitive Measures More Similar to Different Measures with the Same People or the Same Measures with Different Cohorts?**

*Presenter: Aisling Murray, Economic and Social Research Institute, Ireland*



**Reconstructing the Child's Life: The Triangulation of Longitudinal Data from Parents, Children and Social Workers**

*Presenter: Ksenia Eritsyan, National Research University Higher School of Economics, Russia*  
*Co-authors: Veronika Odinkova, Sociological Institute of the Russian Academy of Sciences, Russia; Maia Rusakova, Alexandra Lyubimova, Saint-Petersburg State University, Russia*

**Using Longitudinal Data to Estimate Scale Reliabilities**

*Presenter: Harvey Goldstein, University of Bristol, UK*  
*Co-authors: Michele Haynes, Australian Catholic University, Australia; George Leckie, University of Bristol, UK*

**17:00 – 17:15 REFRESHMENT BREAK**

**17:15 – 18:00 SLLS ANNUAL GENERAL MEETING H 04**

**18:00 – 19:30 POSTER SESSION AND WELCOME DRINKS FOYERS 1 & 2**

**19:30 EVENING OUT FOR STUDENT/EARLY CAREER DELEGATES MEETING POINT: FOYER 2**

2020

Celebrating the Society's  
10th Anniversary!

SLLS Annual Conference  
Vilnius, Lithuania

Call for Abstracts:  
October 2019

5-7 October  
2020

Pre-conference workshops on the 4th

save  
thedata

## POSTER PRESENTATIONS

## FOYERS 1 & 2

### **The Contribution of Drinking Culture at Comprehensive School to Heavy Episodic Drinking from Adolescence to Midlife**

*Presenter: Noora Berg, Uppsala University, Sweden*

*Co-authors: Marianna Virtanen, Anne Hammarström, Uppsala University, Sweden; Tomi Lintonen, Finnish Foundation for Alcohol Studies, Finland*

### **(Dis)Advantaged Childhoods and Premature Mortality: Cumulative Inequalities Over the Life-Course**

*Presenter: Josephine Jackisch, Stockholm University, Sweden*

### **The Impact of Life Course Social Adversity On Cognitive Functioning in Old Age: The Mediating Influence of Loneliness and Obesity**

*Presenter: Morgane Kunzi, University of Geneva, Switzerland*

*Co-authors: Cristian Carmeli, University of Lausanne, Switzerland; Leyla Khenissi, Wiktor Olszowy, Olga Trofimova, Silvia Stringhini, Bogdan Draganski, Matthias Kliegel, Nicola Ballhausen, University of Geneva, Switzerland*

### **Industrial Automation and Labor Market Outcomes of Different Sociodemographic Groups**

*Presenter: Juha Luukkonen, University of Helsinki, Finland*

*Co-authors: Pekka Martikainen, Elina Einiö, University of Helsinki, Finland; Matti Sarvimäki, Aalto University School of Business, Finland*

### **The Transition of the Significant Others Among Japanese Senior Citizens: A Sequence Analysis Approach**

*Presenter: Tomoo Nakata, Hokusei Gakuen University, Japan*

### **Asset Transfer from Grandparents and Children's Education: Evidence Through the Qualified Educational Fund Giving Trusts in Japan**

*Presenter: Midori Otani, Keio University, Japan*

*Co-author: Hideo Akabayashi, Keio University, Japan*

### **Why Do Low-Educated People Often Remain Abstaining from Continuing Education? Motivational and Social Causes Over a Span of 10 Years**

*Presenter: Matthias Sandau, University of Potsdam, Germany*

### **Marital Biography and Health: Investigating Life Courses of the European Population 50+**

*Presenter: Johanna Schütz, German Youth Institute, Germany*

### **Embedded Love: The Interdependence of Intimate Relationships, Previous Relationship Experiences, Social Values and Environmental Factors**

*Presenter: Andrea Umhauer, University of Innsbruck, Austria*

*Co-authors: Fred Berger, University of Innsbruck, Austria; Helmut Fend, University of Zurich, Switzerland*

### **Introducing the Hungarian Birth Cohort Study**

*Presenter: Zsuzsanna Veroszta, Hungarian Demographic Research Institute, Hungary*

*Co-authors: Julianna Boros, Krisztina Kopcsó, Laura Szabó, Hungarian Demographic Research Institute, Hungary*

### **The Scarring Effect of Youth Unemployment on Mental Health: Does Entering the Labour Market During a Recession Make a Difference?**

*Presenter: Liam Wright, University College London, UK*

*Co-authors: Jenny Head, Stephen Jivraj, University College London, UK*

### **Life Course Disorder and Depression Among Older Women in the United States and Europe**

*Presenter: Sara Zobl, University of Michigan, USA*

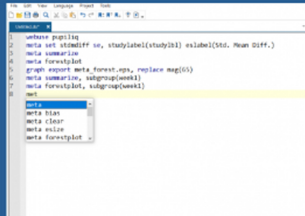
### **Longitudinal Examination of the Importance of Moral Obligation in Predicting Pro-Environmental Behavior**

*Presenter: Rita Žukauskienė, Mykolas Romeris University, Lithuania*

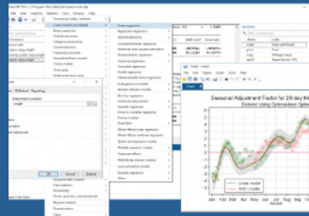
*Co-authors: Goda Kaniušonytė, Inga Truskauskaitė-Kunevičienė, Mykolas Romeris University, Lithuania*



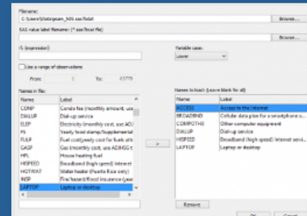
## NEW in Stata



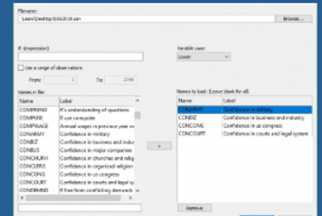
Do-file Editor autocompletion



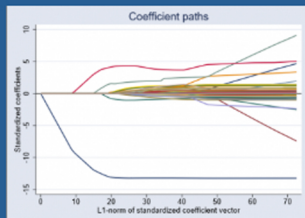
general, collage



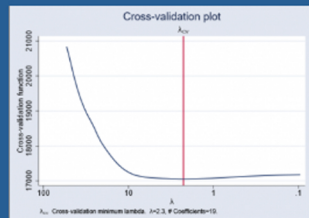
import sas dialog box



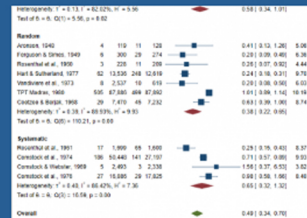
import spss dialog box



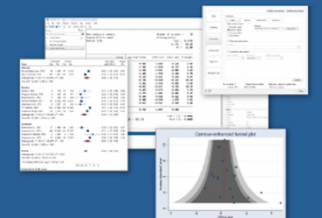
Lasso, coefficient paths graph



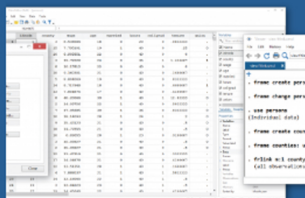
Lasso, cross-validation plot graph



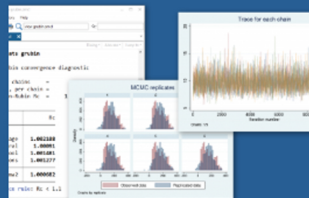
Meta, forest-plot graph



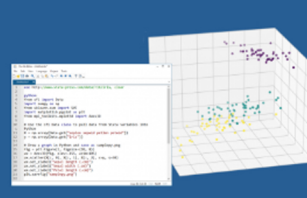
meta-analysis, collage



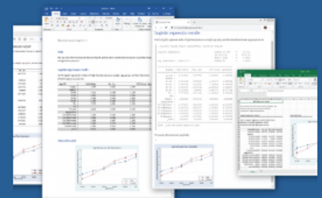
multiple-datasets, collage



New in Bayesian analysis, collage



Python integration



reporting, collage

# Official Stata Distributor for Germany, The Netherlands and Austria



DPC Software GmbH

Solingen | Breda | Wien

[www.dpc-software.de](http://www.dpc-software.de) | [www.dpc-onlineshop.de](http://www.dpc-onlineshop.de)  
[info@dpc-software.de](mailto:info@dpc-software.de) | +49 (0)212 / 260 66 0

## DAY 2 THURSDAY 26th SEPTEMBER 2019

---

08:00 – 09:00 REGISTRATION FOYER 1

### PARALLEL SESSION 4

---

#### 4A

09:00 – 10:30

##### SYMPOSIUM ROOM 12

###### **Out of Home Care During Childhood: Impacts on Individuals and Families**

*Convenor and Chair: Amanda Sacker, University College London, UK*

###### **Non-Parental Care and Mortality: A 40-Year Follow-Up Using the ONS Longitudinal Study**

*Presenter: Amanda Sacker, UCL, UK*

*Co-author: Emily Murray, UCL, UK*

###### **Childhood Experiences of Out-of-Home Care and Trajectories of Suicide Attempts from Emerging Adulthood Up Until Retirement Age: A Prospective Study of a 1953 Cohort**

*Presenter: Ylva B. Almquist, Stockholm University, Sweden*

*Co-authors: Yerko Rojas, Lars Brännström, Stockholm University*

###### **A Challenging Transition to Adulthood: Mental Disorder, Drug Abuse, and in Neet?**

*Presenter: Mette Lausten, VIVE – the Danish Center for Social Science Research, Denmark*

*Co-author: Tea Torbenfeldt Bengtsson, VIVE, Denmark*

###### **Lifelong Links: Restoring Identities for Children in Care**

*Presenter: Mariela Neagu, Rees Centre for Fostering & Education, University of Oxford, UK*

*Co-authors: Lisa Holmes, Eran Melkman, Rees Centre for Fostering & Education, University of Oxford, UK*

###### **Are Care-Givers' Children Affected by Fostering? Long-Term Adult Outcomes**

*Presenter: Amanda Sacker, UCL, UK*

*Co-author: Emily Murray, UCL, UK*

#### 4B

09:00 – 10:30

##### SYMPOSIUM ROOM H 04

###### **Social-Biological Transitions Using Integrated Social and Biological Data: Recent Findings, Europe 2019**

*Convenor and Chair: David Blane, Imperial College London, UK*

###### **Testing Bioecological Enhancement and Stress Diathesis in a Multidimensional Framework of Socio-Economic Status: Non-Linear Gene-Environment Interactions in the IQ Development of German Twins**

*Presenter: Martin Diewald, Bielefeld University, Germany*

*Co-authors: V. Langa, Bastian Moenkediek, Lena Weigel, Bielefeld University, Germany*

###### **Working Longer at Older Ages and Morbidity-Mortality Risk Among Those Employed in Arduous Jobs**

*Presenter: Chiara Ardito, University of Torino, Italy*

*Co-authors: C. Sacerdote, A. d'Errico, A. Bena, Giuseppe Costa, University of Torino, Italy*

###### **Life Course Analysis, Life Course Biology and the Nature of Health at Older Ages**

*Presenter: Stéphane Cullati, University of Geneva, Switzerland*

*Co-author: David Blane, Imperial College London, UK*

###### **Social and Biological Predictors of Falls at Older Ages**

*Presenter: Jessica Abell, University College London, UK*

*Co-authors: Camille Lassale, David Batty, Paola Zaninotto, University College London, UK*

###### **Traumatic Brain Injury and Gastrointestinal Disease**

*Presenter: Scott Montgomery, University of Örebro, Canada*

*Co-author: Ayako Hiyoshi, Katja Fall, University of Örebro, Canada*

4C

09:00 – 10:30

## SYMPOSIUM ROOM 13

**Harmonising Data for Comparative Research: New Findings and Resources on Mental Health, Cognition, Physical Activity and Epigenetics from the CLOSER Consortium***Convenor and Chair: Dara O'Neill, UCL Institute of Education, UK***Harmonisation of Mental Health Measures in the British Birth Cohorts***Presenter: Eoin McElroy, UCL Institute of Education, UK**Co-authors: Praveetha Patalay, Dawid Gondek, Alissa Goodman, George B. Ploubidis, UCL Institute of Education, UK; Marcus Richards, MRC, University College London, UK; Kate Northstone, University of Bristol, UK; Pasco Fearon, University College London, UK***'The Devil is in the Detail': Assessment and Harmonisation of Cognitive Measures in British Birth Cohorts***Presenter: Vanessa Moulton, UCL Institute of Education, UK**Co-authors: Eoin McElroy, Gabriela Conti, Emla Fitzsimons, George B. Ploubidis, Alice Sullivan, UCL Institute of Education, UK; Marcus Richards, MRC, University College London, UK***Socioeconomic Differentials in Physical Activity by Age and Cohort: Findings from Six UK Longitudinal Studies***Presenter: Meg Fluharty, UCL Institute of Education, UK**Co-authors: Snehal Pinto Pereira, Barbara Jefferis, University College London, UK; Nicholas Timpson, University of Bristol, UK; Lucy Griffiths, Swansea University Medical School, UK; David Bann, UCL Institute of Education, UK; Mark Hamer, Loughborough University, UK; Rachel Cooper, Manchester Metropolitan University, UK; Michaela Benzeval, University of Essex, UK***Characterizing the Human Methyome Across the Life Course***Presenter: Esther Walton, University of Bristol, UK**Co-authors: Riccardo Marioni, University of Edinburgh, UK; Hannah Elliott, Caroline Relton, University of Bristol, UK; Juan Castillo-Fernandez, Jordana Bell, King's College London, UK***The Role of Harmonisation in Comparative Research: Overcoming Obstacles, Uncovering Opportunity***Presenter: Dara O'Neill, UCL Institute of Education, UK**Co-author: Rebecca Hardy, UCL Institute of Education, UK*

4D

09:00 – 10:30

## SYMPOSIUM ROOM 14

**Advances to the Life Course Approach from Mexican Socio-Demography***Convenor and Chair: Nina Castro-Mendez, Facultad de Ciencias, UNAM, Mexico***The Life Course Approach and Mexican Socio-Demography***Presenter: Mercedes Blanco, El Colegio de México**Co-author: Edith Pacheco, El Colegio de México***Short-Term Work Trajectories for Young People in Mexico: Changes in the Long Term and Generation Time***Presenter: Ana Escoto, Facultad de Ciencias Políticas y Sociales, UNAM, Mexico***Inequality and Living Arrangements Trajectories of Single Mothers in Mexico***Presenter: Landy Sánchez Peña, El Colegio de México**Co-authors: Julieta Pérez Amador, Edith Pacheco, El Colegio de México***Women's Working Trajectories in the Second Half of the XX Century***Presenter: Nina Castro, Facultad de Ciencias, UNAM, Mexico**Discussant: Luciana Gandini, Instituto Investigaciones Jurídicas, UNAM, Mexico*

**4E****09:00 – 10:30****PAPER SESSION: SEQUENCE ANALYSIS ROOM 15***Chair: Dario Spini, University of Lausanne, Switzerland***Linked Lives and Couples' Later Life Well-Being in Finland and Germany: A Three-Channel Sequence Analysis of Couples' Life Courses Across Countries***Presenter: Andreas Weiland, Mannheim Centre for European Social Research, Germany  
Co-authors: Katja Möhring, Mannheim Centre for European Social Research, Germany;  
Miika Mäki, Anna Rotkirch, Population Research Institute, Finland***Trajectories of Family Economy and Family Structure and Health Consequences Among U.S. Heterosexual Couples: A Multichannel Sequence Approach***Presenter: Wen Fan, Boston College, USA***An Introduction to the Sequence Analysis Association (SAA)***Presenter: Emanuela Struffolino, WZB - Berlin Social Science Center, Germany***4F****09:00 – 10:30****PAPER SESSION: PHYSICAL HEALTH ROOM 16***Chair: Desmond O'Mahony, Economic and Social Research Institute, Ireland***Socioeconomic Status Disparities in Early Child Obesity: Lessons from Eight Latin American Countries***Presenter: Alejandra Abufhele Milad, Pontificia Universidad Catolica de Chile, Chile  
Co-authors: Jane Waldfogel, Columbia University, USA; Marigen Narea, Kasim Allel, Universidad Catolica, Chile***Trajectories of Depressive Mood Following the Onset of a Chronic Health Condition***Presenter: Caroline Debnar, Swiss Paraplegic Research, Switzerland  
Co-authors: Valérie Carrard, Claudio Peter, Swiss Paraplegic Research, Switzerland;  
Davide Morselli, University of Lausanne, Switzerland; Michel Gisela, University of Lucerne, Switzerland; Nicole Bachmann, University of Applied Sciences and Arts, Switzerland***Childhood Socio-Economic Position and Midlife Physical Functioning: Exploring Associations and Underlying Mechanisms in the 1958 British Birth Cohort***Presenter: Ayesha Ahmed, University College London, UK  
Co-author: Snehal Pinto Pereira, University College London, UK***Socioeconomic Position and Body Composition Across the Life Course: A Systematic Review***Presenter: Charis Bridger Staatz, University College London, UK  
Co-authors: Rebecca Hardy, Yvonne Kelly, Rebecca Lacey, Anitha George, Joanna Blodgett, University College London, UK***Tracking the Physical Activity Levels of the Growing Up in Ireland Child Cohort from Childhood to Adolescence***Presenter: Desmond O'Mahony, Economic and Social Research Institute, Ireland  
Co-author: Eoin McNamara, Economic and Social Research Institute, Ireland*



## 4G

09:00 – 10:30

**PAPER SESSION: PRECARIOUS TRANSITIONS ROOM 17***Chair: Emilie Counil, Ined - French Institute for Demographic Studies, France***All You NEET is ...? The Effects of Programme Participation on the Labour Market Integration of Young Welfare Recipients***Presenter: Tamara Harrer, Institute for Employment Research (IAB), Germany***Exploring the Concept of "Long Term Precariousness": Towards a New Indicator***Presenter: Magda Nico, CIES-IUL /ISCTE-University Institute of Lisbon, Portugal**Co-authors: Nuno de Almeida Alves, Helena Carvalho, Diana Carvalho, CIES-IUL /ISCTE-University Institute of Lisbon, Portugal***Precarious Employment Trajectories and Health: Combining Qualitative and Quantitative Approaches Based on a Patient Cohort to Study the Association at the Population Level***Presenter: Emilie Counil, Ined - French Institute for Demographic Studies, France**Co-authors: Sofyane Issa, Aude Leduc, DREES, Ministry of Health, France; Mélanie Bertin, Inserm, France; Giscop93 Team, France*

## 4H

09:00 – 10:30

**PAPER SESSION: WORK STRESS ROOM 21***Chair: Jutta Heckhausen, University of California, Irvine, USA***Trends of Psychosocial Work Stressors in Europe: A Comparative Analysis Using the European Working Conditions Survey***Presenter: Thorsten Lunau, University of Düsseldorf, Germany**Co-author: Mariann Rigo, University of Düsseldorf, Germany***The Development of a Life Course Index of Stressful Events in a UK Birth Cohort Study***Presenter: Frances Harkness, University College London, UK**Co-authors: Aradhna Kaushal, Marcus Richards, University College London, UK***Social Inequalities in Medical Rehabilitation Outcomes: A Registry Based Study on 240,676 Insured Persons in Germany***Presenter: Simon Götz, University of Duesseldorf, Germany**Co-authors: Morten Wahrendorf, Nico Dragano, Johannes Siegrist, University of Duesseldorf, Germany***When Intrinsic Work Values Hurt: Job Stress and Affective Health***Presenter: Jutta Heckhausen, University of California, Irvine, USA**Co-authors: Monica Kirkpatrick Johnson, Washington State University, USA; Jeylan Mortimer, University of Minnesota, USA*

## 4I

09:00 – 10:30

**PAPER SESSION: HEALTH IN OLD AGE ROOM 22***Chair: Ingrid Schoon, UCL Institute of Education, UK***Race, Death of a Child, and Dementia Risk in the United States***Presenter: Debra Umberson, University of Texas at Austin, USA**Co-authors: Matthew Farina, Minle Xu, Michael Garcia, University of Texas at Austin, USA***Acute Healthcare Utilization Trends in the Last Two Years of Life Among the Elderly: A Longitudinal Cohort Study on a Large Population in the North-East of Italy***Presenter: Claudio Barbiellini Amidei, University of Padua, Italy**Co-authors: Andrea Bardin, Cristina Canova, Francesca Gessoni, Silvia Macciò, Federica Turatto, Lorenzo Simonato, University of Padua, Italy***Early-Life Predictors of Retirement Decisions and Post-Retirement Health***Presenter: Matthew Iveson, University of Edinburgh, UK**Co-author: Ian J. Deary, University of Edinburgh, UK*

**Changes in Secondary Healthcare Use Over Retirement Transition: Examining Social Differences with Swedish Register Data**

Presenter: Martin Wetzel, University of Cologne, Germany

Co-authors: Stefanie König, Gothenburg University, Sweden; Susanne Kelfve, Linköping University, Sweden

**The Factors Associated with Entry to Formal Care for the Elderly in Scotland: A Longitudinal Analysis**

Presenter: D. Helen Corby, University of Edinburgh, UK

Co-authors: Dawn Everington, John M. Starr, Ian J. Deary, Chris Dibben, University of Edinburgh, UK

10:30 – 11:00 COFFEE BREAK FOYER 2

## PARALLEL SESSION 5

### 5A

11:00 – 12:30

#### SYMPOSIUM ROOM 12

**Criminal Behaviour Across the Life-Course**

Convenor and Chair: Meintje van Dijk, Netherlands Institute for the Study of Crime and Law Enforcement (NSCR), Netherlands

**Effects of Gang Membership on the Criminal Life Course of Gang Members**

Presenter: Sjoukje van Deuren, NSCR

Co-authors: Arjan Blokland, NSCR; Edward Kleemans, Vrije Universiteit Amsterdam, Netherlands

**Intergenerational Continuity of Crime Among Children of Organized Crime Offenders in the Netherlands**

Presenter: Meintje van Dijk, NSCR

Co-Authors: Steve van de Weijer, Veroni Eichelsheim, NSCR; Edward Kleemans, Vrije University, Netherlands; Melvin Soudijn, Dutch National Police, Netherlands

**The Transfive Study: Five Generations of Crime?**

Presenter: Steve van de Weijer, NSCR

**Growing Up in (Different Types of) Single-Parent Families and Criminal Involvement of Adolescents**

Presenter: Jan Rouwendal, Vrije Universiteit Amsterdam, Netherlands

Co-authors: Janique Kroese, Wim Bernasco, NSCR; Aart C. Liefbroer, University of Groningen, Netherlands

### 5B

11:00 – 12:30

#### SYMPOSIUM ROOM 13

**Theoretical and Practical Considerations When Working with Social and Biological Data**

Convenor and Chair: Tony Robertson, University of Stirling, UK

**The Value of Biomarker Data in Social Sciences**

Presenter: Michaela Benzeval, University of Essex, UK

Co-authors: Tony Robertson, University of Stirling, UK; Meena Kumari, University of Essex, UK

**How We Do Biosocial Research: Developing a Biomarker Glossary**

Presenter: Tony Robertson, University of Stirling, UK

Co-authors: Michaela Benzeval, Cara Booker, University of Essex, UK; Martin Betzer, Ethan Narimatsu, University of Stirling, UK

**Biosocial Research Across Datasets: The Example of Allostatic Load, and its Composition by Age, Across Seven Datasets**

Presenter: Meena Kumari, University of Essex, UK

Co-authors: Cara Booker, Milagros Ruiz, University of Essex, UK

**Missing Data in Biosocial Research**

Presenter: Tarani Chandola, University of Manchester, UK

## 5C

11:00 – 12:30

## SYMPOSIUM ROOM H 04

**Harmonising Analysis Using Child Cohort Data from Across the Globe***Convenor and Chair: Paul Bradshaw, ScotCen, Scotland***Growing Up Healthy in Families Across the Globe: The Vision and the Reality of Harmonising Analysis Across Five Longitudinal Studies***Presenter: Chris Cunningham, Massey University, New Zealand***Post Hoc Harmonised Analysis: Methods Applied to Identifying and Harmonising Measures of Child Developments and Associated Risks***Presenter: Patty Doran, University of Manchester, UK***Cross-Cohort Comparisons of Socio-Emotional Well-Being Using Data from Ireland and Scotland***Presenter: Paul Bradshaw, ScotCen, Scotland**Co-author: Emer Smyth, Economic and Social Research Institute, Ireland***The Well-Being of Children Exposed to Risk: Comparative Analysis of Longitudinal Data from Ireland, Scotland and New Zealand***Presenter: Susan Morton, University of Auckland, New Zealand**Co-authors: Dan Tautolo, Auckland University of Technology, New Zealand; Paul Bradshaw, ScotCen, Scotland; Emer Smyth, Economic and Social Research Institute, Ireland; Patty Doran, University of Manchester, UK; Chris Cunningham, Massey University, New Zealand*

## 5D

11:00 – 12:30

## SYMPOSIUM ROOM 14

**The Importance and Determinants of Wealth Accumulation Over the Life Course***Convenor and Chair: Bilal Nasim, University College London, UK***Wealth and Child Development Through the Lens of Life Course Theory***Presenter: Ludovica Gambaro, University College London, UK**Co-author: Mary Clare Lennon, City University of New York, USA***Parental Wealth and Children's Cognitive Ability, Mental and Physical Health***Presenter: Vanessa Moulton, University College London, UK**Co-authors: Ludovica Gambaro, Bilal Nasim, George B. Ploubidis, Alissa Goodman, University College London, UK***The Effect of Parental Wealth on Children's Outcomes in Early Adulthood***Presenter: Eleni Karagiannaki, London School of Economics, UK***Wealth Accumulation Patterns Among Britain's Younger Generation***Presenter: Ellie Suh, London School of Economics, UK***Estimating and Decomposing the Intergenerational Socioeconomic Gradient in Adult Wealth Accumulation***Presenter: Bilal Nasim, University College London, UK**Co-author: Vanessa Moulton, University College London, UK*

**5E****11:00 – 12:30****PAPER SESSION: LIFE COURSE TRANSITIONS ROOM 15***Chair: Wolfgang Lauterbach, University of Potsdam, Germany***Education and Physical Health Trajectories in Later Life: A Comparative Study***Presenter: Liliya Leopold, University of Amsterdam, Netherlands***Lifecourse Social Capital and Biomarkers in Middle Life: Evidence from the 1958 British Birth Cohort***Presenter: Stergiani Tsoli, UCL Institute of Education, UK**Co-authors: Alice Sullivan, George B. Ploubidis, UCL Institute of Education, UK***Aging in Different Welfare Contexts: A Comparative Perspective on Later-Life Employment and Health***Presenter: Ignacio Madero-Cabib, Catholic University of Chile, Chile**Co-authors: Laurie Corna, King's College London, UK; Isabel Bauman, Zurich University of Applied Sciences, Switzerland***5F****11:00 – 12:30****PAPER SESSION: FAMILY TRANSITIONS ROOM 16***Chair: Lisbeth Loft, Columbia University, Institute for Social and Economic Research and Policy (ISERP), USA***Separation, Child-support and Well-Being in Uruguay***Presenter: Andrea Vigorito, Universidad de la Republica, Uruguay**Co-author: Marisa Bucheli, Universidad de la Republica, Uruguay***Mental Health Dynamics around Marital Separation. Moderating Effects of Parenthood and Children's Age***Presenter: Katharina Loter, Martin Luther University Halle-Wittenberg, Germany**Co-authors: Oliver Arránz Becker, Martin Luther University Halle-Wittenberg, Germany;**Małgorzata Mikucka, Mannheim Centre for European Social Research, Germany;**Christof Wolf, GESIS Leibniz-Institute for the Social Sciences, Germany***Linking Family Transitions and Later-Life Depression: Does Life-Course Socio-Economic Standing Matter?***Presenter: Claudia Recksiedler, German Youth Institute, Germany**Co-authors: Boris Cheval, Stefan Sieber, Stéphane Cullati, University of Geneva, Switzerland; Robert S. Stawski, Oregon State University, USA***How Family Environment Transitions Affect Health and Wellbeing in Old Age***Presenter: Lisbeth Loft, Columbia University, Institute for Social and Economic Research and Policy (ISERP), USA***5G****11:00 – 12:30****PAPER SESSION: PRECARIOUS YOUTH TRANSITIONS ROOM 17***Chair: Elizabeth Cooksey, The Ohio State University, USA***Intergenerational Transmission of Unemployment: Do Fathers and Mothers Matter, and Why?***Presenter: Brigitte Schels, Friedrich-Alexander-University of Erlangen-Nuremberg, Germany**Co-author: Silke Anger, Kerstin Ostermann, Institute for Employment Research, Germany***A Dynamic View of Youth Employment Precarity: Labour Market Trajectories and Conditional Effects***Presenter: Anna Kiersztyn, University of Warsaw, Poland***The Scarring Effect of Youth Unemployment on Mental Health: Does Entering the Labour Market During a Recession Make a Difference?***Presenter: Liam Wright, University College London, UK**Co-authors: Jenny Head, Stephen Jivraj, University College London, UK*

**5H****11:00 – 12:30****PAPER SESSION: INTERGENERATIONAL SOLIDARITY ROOM 21***Chair: Diana Carvalho, CIES-IUL /ISCTE-University Institute of Lisbon, Portugal***Embedded Love: The Interdependence of Intimate Relationships, Previous Relationship Experiences, Social Values and Environmental Factors***Presenter: Andrea Umhauer, University of Innsbruck, Austria**Co-authors: Fred Berger, University of Innsbruck, Austria; Helmut Fend, University of Zurich, Switzerland***Predicting Intergenerational Solidarity in Adulthood: Results from a German Longitudinal Study***Presenter: Fred Berger, University of Innsbruck, Austria**Co-author: Helmut Fend, University of Zurich, Switzerland***Facets of Parent-Child Relations in Adulthood and Their Role in Transmitting Economic Deprivation Across Generations***Presenter: Marion Fischer-Neumann, University of Hamburg, Germany**Co-author: Petra Böhnke, University of Hamburg, Germany***Intergenerational Relationships and Leaving and Returning to the Parental Home***Presenter: Brian Gillespie, University of Groningen, Netherlands***Where are Lives Linked? A Bibliometrical Analysis of the Linked Lives Principle in the Social Sciences Literature***Presenter: Diana Carvalho, CIES-IUL /ISCTE-University Institute of Lisbon, Portugal**Co-authors: Magda Nico, Helena Carvalho, CIES-IUL /ISCTE-University Institute of Lisbon, Portugal***5I****11:00 – 12:30****PAPER SESSION: SUBSTANCE USE ROOM 22***Chair: Melissa Walls, University of Minnesota, USA***Lifecourse Poverty and Adolescent Smoking: Dependency of Effects on Timing and Background***Presenter: Michael Green, University of Glasgow, UK***Linking Adolescent Substance Use Trajectories to Outcomes in Early Adulthood: Implications for Life-Course Development Among Indigenous North Americans***Presenter: Kelley Sittner, Oklahoma State University, USA**Co-authors: Melissa L. Walls, Dane Hautala, University of Minnesota Medical School, USA***Cumulative Prevalence of Early Life Course Psychiatric Disorders: Results from Community-Based Participatory Research with Indigenous North Americans***Presenter: Melissa Walls, University of Minnesota, USA**Co-authors: Dane Hautala, University of Minnesota, USA; Kelley Sittner, Oklahoma State University, USA***12:30 – 13:30 LUNCH MENSA VIA FOYER 1****12:30 – 13:30 LUNCH MEETING 1: SLLS Policy Group ROOM 14 BUILDING 6***Chair: Aisling Murray, Economic and Social Research Institute, Ireland***12:30 – 13:30 LUNCH MEETING 2: SLLS Interdisciplinary Health Research Group ROOM 15 BUILDING 6***Chair: David Blane, Imperial College London, UK***12:00 – 13:30 LUNCH MEETING 3: LLCS Journal Editorial Committee ROOM 16 BUILDING 6***Chair: Heather Joshi, UCL Institute of Education, UK*

**13:30 – 14:30 KEYNOTE PRESENTATION ROOM H 04****Transition to Adulthood in East Asia: Illustrations from the Taiwan Youth Project***Presenter: Chin-Chun Yi, Academia Sinica, Taiwan**Chair: Johanna Turgetto, University of Potsdam, Germany***14:30 – 15:00 COFFEE BREAK FOYER 2****PARALLEL SESSION 6**

---

**6A****SYMPOSIUM ROOM H 04****15:00 – 16:30****Risky Behaviours in Childhood and Adolescence: Development and Gender Differences***Convenor and Chair: Diana Warren, Australian Institute of Family Studies, Australia***Adolescent Delinquent Behaviour: Are Predictors Different for Girls and Boys?***Presenter: Suzanne Vassallo, Australian Institute of Family Studies, Australia**Co-author: Diana Warren, AIFS, Australia***Instability of Family Structure Across Childhood and Adolescent Antisocial Behaviour***Presenter: Emla Fitzsimons, University College London, UK**Co-author: Aase Villadsen, University College London, UK***Anti-Social Behaviour Among Irish Youth: Is Early or Late Adolescence More 'Risky'?***Presenter: Aisling Murray, Economic and Social Research Institute, Ireland**Co-authors: Emer Smyth, Dorothy Watson, Economic and Social Research Institute, Ireland***Comparing Adolescent Risky Behaviour in Scotland and Australia: Preliminary Findings from Harmonised Analysis of Two 'Growing Up' Studies***Presenter: Paul Bradshaw, Scottish Centre for Social Research, Scotland**Co-authors: Diana Warren, Galina Daraganova, Australian Institute for Family Studies, Australia***Discussant:** *Emla Fitzsimons, University College London, UK***6B****SYMPOSIUM ROOM 12****15:00 – 16:30****Positive Psychosocial Functioning Across Contexts and Populations***Convenors and Chairs: Steven Hope, UCL GOS Institute of Child Health, UK and Meredith O'Connor, Murdoch Children's Research Institute and Australian National University, Australia***Prevalence and Course of Mental Health Competence Over Childhood: Comparison of UK and Australian Cohorts***Presenter: Meredith O'Connor, Murdoch Children's Research Institute, Australia**Co-authors: Steven Hope, Russell Viner, UCL GOS Institute of Child Health, UK;**Sharon Goldfeld, Murdoch Children's Research Institute, Australia***Development and Predictors of Subjective Wellbeing in Early and Mid-Adolescence: Findings from the Millennium Cohort Study***Presenter: Praveetha Patalay, University College London, UK**Co-author: Emla Fitzsimons, University College London, UK***Health and Voting Across the Life-Course: Evidence from the National Child Development Study***Presenter: Thierry Gagné, University College London, UK**Co-authors: Ingrid Schoon, UCL Institute of Education, UK; Amanda Sacker, University College London, UK***Mental Health Competence in Early Adolescence and its Association with Risk-Taking Health Behaviours in Mid-Adolescence: Findings from the UK Millennium Cohort Study***Presenter: Steven Hope, UCL GOS Institute of Child Health, UK**Co-authors: Emeline Rougeaux, Russell Viner, UCL GOS Institute of Child Health, UK; Andy Ross, University College London, UK; Anna Pearce, University of Glasgow, UK*



**6C**

15:00 – 16:30

**SYMPOSIUM ROOM 13****Congruence Over Time and Populations: Exploring the Use of Retrospectively Harmonised Mental Health and Cognition Variables in the British Birth Cohorts***Convenor and Chair: Vanessa Moulton, University College London, UK***Harmonisation of the Age 10 Cognitive Measures in British Birth Cohorts***Presenter: Vanessa Moulton, University College London, UK**Co-authors: Eoin McElroy, Gabriela Conti, Emla Fitzsimons, George B. Ploubidis, Marcus Richards, Alice Sullivan, University College London, UK***Sociodemographic Predictors of Mid-Life Cognitive Ability: A Cross Cohort Analysis***Presenter: Eoin McElroy, University College London, UK**Co-authors: Vanessa Moulton, Gabriela Conti, Emla Fitzsimons, George B. Ploubidis, Marcus Richards, Alice Sullivan, University College London, UK***Secular Trends in Childhood Emotional and Behavioural Problems: Evidence from the British Birth Cohorts***Presenter: Eoin McElroy, University College London, UK**Co-authors: Praveetha Patalay, Dawid Gondek, George Ploubidis, University College London, UK***Parent and Teacher Reports of Child Mental Health as Predictors of Self-Reported Mental Health: Comparing Two British Birth Cohorts***Presenter: Aase Villadsen, University College London, UK**Co-authors: Eoin McElroy, George B. Ploubidis, University College London, UK***6D**

15:00 – 16:30

**SYMPOSIUM ROOM 14****Wealth Inequality and the Life Course***Convenor and Chair: Philipp Lersch, Humboldt University Berlin, Germany***How Money Buys Skills: Testing the Mediators Between Parent's Wealth and Children's Competence Among Pre-Schoolers in Germany***Presenters: Jascha Dräger, Klaus Pforr, GESIS, Germany**Co-author: Nora Müller, GESIS, Germany***Work-Family Life Courses and Wealth Accumulation: Comparing Baby Boomers and Millennials***Presenter: Rob Gruijters, University of Cambridge, UK**Co-authors: Zachary Van Winkle, University of Oxford, UK; Anette Fasang, Humboldt University Berlin, Germany***Family Wealth and Educational Attainment: A Three Generational Study of Young Adults in Norway***Presenter: Marianne N. Hansen, University of Oslo, Norway**Co-author: Øyvind Wiborg, Oslo Metropolitan University, Norway***Private Insurance Against Unemployment: How Wealth Reduces Wage Scars***Presenter: Fabian Pfeffer, University of Michigan, USA**Co-author: Martin Ehlert, WZB Berlin Social Science Center, Germany***Wealth Mobility in the US: 2001-2015***Presenter: Nora Waitkus, University of Bremen, Germany***6E**

15:00 – 16:30

**DEBATE SESSION ROOM 15****Economic and Social Research Council (ESRC) Data Strategy***Presenter and Chair: Anna Vignoles, University of Cambridge, UK*

**6F**

15:00 – 16:30

**PAPER SESSION: FEMALE LIFE COURSE TRANSITIONS ROOM 16***Chair: Delma Byrne, Maynooth University, Ireland***Alternative Ways to Higher Education: A Reconstruction of Gender Effects***Presenter: Magdalena Pratter, University of Bamberg, Germany***Exploring the Paths of Young Mothers in Australia: A Sequence Analysis of Labour Market and Educational Trajectories Pre- and Post- Parenthood***Presenter: Janeen Baxter, University of Queensland, Australia**Co-authors: Sara Kalucza, Jack Lam, University of Queensland, Australia***Changing Employment Patterns of Women in Later Life: A Cohort Analysis Using Danish Register Data***Presenter: Agnete Aslaug Kjær, The Danish Center for Social Science Research (VIVE), Denmark***Lone Parents and Maternal Access to Education/Training in Ireland and Scotland***Presenter: Delma Byrne, Maynooth University, Ireland**Co-author: Morag Treanor, University of Stirling, UK***6G**

15:00 – 16:30

**PAPER SESSION: VULNERABLE YOUTH ROOM 17***Chair: Mariela Neagu, University of Oxford, UK***Is 'First in the Family' a Good Indicator for Widening University Participation?***Presenter: Morag Henderson, UCL Institute of Education, UK**Co-authors: Nikki Shure, Anna Adamecz-Volgyi, UCL Institute of Education, UK***Special Educational Needs and Disability: A Lifetime of Disadvantage in the Labour Market?***Presenter: Samantha Parsons, UCL Institute of Education, UK**Co-author: Lucinda Platt, London School of Economics, UK***Growing Up Lonely? Social Outcomes for Three Generations of UK Teenagers Identified with Special Education Needs or Disabilities: Evidence of Disadvantage Over the Life-Course***Presenter: Samantha Parsons, UCL Institute of Education, UK**Co-author: Lucinda Platt, London School of Economics, UK***What Mattered to Them: Life Course Perspectives of Romanian Born Care Leavers and Adoptees***Presenter: Mariela Neagu, University of Oxford, UK***6H**

15:00 – 16:30

**PAPER SESSION: INCOME AND WEALTH ROOM 21***Chair: Alejandra Abufhele Milad, Pontificia Universidad Catolica de Chile, Chile***Marital Dissolution and Personal Wealth: Examining Gendered Trends Across the Dissolution Process***Presenter: Nicole Kapelle, Humboldt-University of Berlin, Germany**Co-author: Janeen Baxter, University of Queensland, Australia***Diversity in Family Life Course Patterns and Intra-Cohort Personal Wealth Disparities at Late Working Age***Presenter: Nicole Kapelle, Humboldt-University of Berlin, Germany**Co-author: Sergi Vidal, University of Barcelona, Spain***Personal Growth After Grey Divorce: A Longitudinal View on the Dissolution of Long-Term Marriages***Presenter: Claudia Recksiedler, German Youth Institute, Germany**Co-authors: Katharina E. Loter, Oliver Arránz Becker, University of Halle-Wittenberg, Germany; Pasqualina Perrig-Chiello, University of Bern, Switzerland*

**Explaining Wage Differences Between Individuals with Different Types of Higher Education: A Lifecourse Perspective**

*Presenter: Fabian Sander, Swiss Federal Institute for Vocational Education and Training, Switzerland*

*Co-author: Irene Kriesi, Swiss Federal Institute for Vocational Education and Training, Switzerland*

**Child Poverty and its Consequences in Development: Evidence from a Chilean Longitudinal Study 2010-2017**

*Presenter: Alejandra Abufhele Milad, Pontificia Universidad Catolica de Chile, Chile*

*Co-author: Amanda Telias, Pontificia Universidad Catolica de Chile, Chile*

61

15:00 – 16:30

**PAPER SESSION: FAMILY SES AND CHILD OUTCOMES ROOM 22**

*Chair: Susan Morton, University of Auckland, New Zealand*

**Similarities and Differences in Social Class Inequalities in School Outcomes**

*Presenter: Vernon Gayle, University of Edinburgh, UK*

*Co-authors: Roxanne Connelly, University of York, UK; Chris Playford, University of Exeter, UK*

**Matthew Effects in Cognitive Development During Childhood: Gaps in Children's Language Skills from Age 5 to 9 in Germany**

*Presenter: Thorsten Schneider, University of Leipzig, Germany*

*Co-author: Tobias Linberg, State Institute for School Quality and Education Research, Germany*

**Designing Longitudinal Surveys for Early Years and Middle Childhood: Children's School Lives**

*Presenter: Abbie Cahoon, University College Dublin, Ireland*

*Co-author: Jennifer Symonds, University College Dublin, Ireland*

**Mind the Gap – Unequal from the Start: Addressing Inequalities Utilising Evidence from Growing Up in New Zealand**

*Presenter: Susan Morton, University of Auckland, New Zealand*

*Co-authors: Caroline Walker, University of Auckland, New Zealand; Polly Atatoa Carr, University of Waikato, New Zealand*

**16:30 – 19:30 FREE TIME / BOOKED TOURS (MEETING POINT: FOYER 2)**

**19:30 – 22:00 CONFERENCE DINNER (ARCONA HOTEL, ZEPPELINSTRASSE 136, 14471 POTSDAM)**



# lifecoursecentre

ARC Centre of Excellence for Children and Families over the Life Course

## COLLABORATE WITH THE LIFE COURSE CENTRE

The Life Course is investigating the critical factors underlying deep and persistent disadvantage. Our mission is to identify the mechanisms that drive disadvantage across generations and within families over the life course, and to develop life-changing solutions for policy and service delivery.

The Centre is a collaboration between four Australian universities - The University of Queensland, the University of Sydney, the University of Melbourne and The University of Western Australia - and has extensive international links with partner universities and affiliate researchers in Europe, North America and Asia.

We are uniquely positioned to lead the global effort against entrenched disadvantage and we welcome new collaborations from international researchers.

**Make contact with us** to learn more about how you can visit the Life Course Centre in Brisbane, Sydney, Melbourne or Perth in Australia, and work with us to compare Australian and international findings and develop new research projects.

**Visit [www.lifecoursecentre.org.au](http://www.lifecoursecentre.org.au) or [lcc@uq.edu.au](mailto:lcc@uq.edu.au)**

### PLEASE COME TO OUR SLLS CONFERENCE SYMPOSIUM:

**1A Life Course Centre Australia** *'Social disadvantage and the educational pathway: School readiness, educational achievement and post school destinations'*

**Day 1, Parallel Session 1, 11:00am-12:30pm Wednesday 25<sup>th</sup> September**

**Life Course Centre research will also be featured in the following sessions:**

**5G, 6E, 6G and 6H on Thursday 26<sup>th</sup> September**

preventing deep disadvantage: realising life's potential

## DAY 3 FRIDAY 27th SEPTEMBER 2019

---

08:30 – 09:00 REGISTRATION FOYER 1

### PARALLEL SESSION 7

---

#### 7A

09:00 – 10:30

##### SYMPOSIUM ROOM 12

###### **The Intergenerational Transmission of Education and Family Values and Behaviour: New Aspects in a Comparative Perspective**

*Convenor and Chair: Wolfgang Lauterbach, University of Potsdam, Germany*

###### **Intergenerational Transmission of Educational Aspiration and Educational Status Over Three Generations: How Does the Educational Expansion Effect Three Family Generations?**

*Presenter: Wolfgang Lauterbach, University of Potsdam, Germany*

*Co-authors: Werner Georg, University of Konstanz, Germany; Helmut Fend, University of Zürich, Switzerland*

###### **Should I Work or Should I Study? The Role of Parents in Shaping Educational Aspirations and Attainment of Their Children in Times of Social Change**

*Presenter: Ingrid Schoon, UCL Institute of Education, UK*

###### **How Do Grandparents' and Parents' Educational Attainments Influence Parents' Educational Expectations for Children?**

*Presenter: Jeylan Mortimer, University of Minnesota, USA*

*Co-author: Mark Lee, University of Minnesota, USA*

###### **Intergenerational Transmission of Parental Divorce On Partnership Patterns**

*Presenter: Jana Gläßer, University of Potsdam, Germany*

*Co-authors: Wolfgang Lauterbach, University of Potsdam, Germany; Fred Berger, University of Innsbruck, Austria; Helmut Fend, University of Zürich, Switzerland*

###### **Education, Homogamy, Reproduction, and Inequality: A Twenty-eight Year Intergenerational Perspective of Canadian Families**

*Presenter: Lesley Andres, University of British Columbia, Canada*

**Discussant:** *Helmut Fend, University of Zürich, Switzerland*

#### 7B

09:00 – 10:30

##### SYMPOSIUM ROOM 13

###### **Cross Cohort Mental Health Research: New Insights and Analyses from Five Birth Cohort Studies**

*Convenor and Chair: Praveetha Patalay, University College London, UK*

###### **Changes in Millennial Mental Health and Health-Related Behaviours Over Ten Years: A Cohort Comparison Study**

*Presenter: Praveetha Patalay, University College London*

*Co-author: Suzanne H. Gage, University of Liverpool, UK*

###### **The Adult Consequences of Adolescent Mental Health Difficulties: A Cohort Comparison Study**

*Presenter: Ellen Thompson, University College London, UK*

*Co-authors: George B. Ploubidis, Alissa Goodman, Marcus Richards, Peter Fonagy, Praveetha Patalay, University College London, UK*

**Association Between Early Life Mental Health and Alcohol Problems in Adulthood and Mediation Role of Education: Evidence from Two British Birth Cohorts**

Presenter: Ke Ning, University College London, UK

Co-authors: Praveetha Patalay, George B. Ploubidis, University College London, UK; Jennifer Maggs, Pennsylvania State University, USA

**Postponement of Childbearing and Mental Health Outcomes: Evidence from three British Birth Cohorts**

Presenter: Maria Sironi, University College London, UK

Co-author: George B. Ploubidis, University College London, UK

7C

09:00 – 10:30

**PAPER SESSION: RETIREMENT AND OLD AGE ROOM H 04**

Chair: Heather Joshi, UCL Institute of Education, UK

**Short-Term U.S. Paths Toward Retirement: Similarities and Differences Compared Across Age/Gender/Class Intersections**

Presenter: Phyllis Moen, University of Minnesota, USA

Co-authors: Sarah Flood, Janet Wang, University of Minnesota, USA

**Pervasive Life Course Inequalities in Incident Depression Among Ageing Adults in China and England: A Prospective Cohort Study**

Presenter: Milagros Ruiz, University College London, UK

Co-authors: Martin Bobak, University College London, UK; Yaoyue Hu, Pekka Martikainen, Max Planck Institute for Demographic Research, Germany

**Intrinsically Rewarding Work and Generative Feelings in Midlife**

Presenter: Harvey Krahn, University of Alberta, Canada

Co-authors: Matthew Johnson, Nancy Galambos, University of Alberta, Canada

**Are There No Atheists in Foxholes? Religiosity When Approaching the End of Life**

Presenter: Merrill Silverstein, Syracuse University, USA

Co-authors: Rebecca Wang, Dongmei Zuo, Vern Bengtson, University of Southern California, USA

**Generation Specific Volunteer Behavior in Retirement in Germany: A Longitudinal Analysis**

Presenter: Luise Burkhardt, DIW Berlin, Germany

7D

**SESSION WITHDRAWN**

7E

09:00 – 10:30

**PAPER SESSION: HEALTH SHOCKS ROOM 15**

Chair: Jan Paul Heisig, WZB Berlin Social Science Center, Germany

**Work Resumption After Temporary Disability Pension: Changes Over Time**

Presenter: Mikko Laaksonen, Finnish Centre for Pensions, Finland

Co-author: Heidi Nyman, Finnish Centre for Pensions, Finland

**The Impact of HIV and Hepatitis B on Sub-Saharan Immigrants' Lives in Paris Greater Area: Results from a Life Event History Survey**

Presenter: Anne Gosselin, French Collaborative Institute on Migration, France

Co-authors: Annabel Desgrées du Loû, Andrainolo Ravalihasy, IRD, Ceped, France; Eva Lelièvre, INED, France

**Marital Shocks and Mortality in France: Recent Evidence from Panel Tax Data**

Presenter: Anne Solaz, Ined, France

Co-authors: Carole Bonnet, Giulia Ferrari, Laurent Toulemon, Ined, France

**Eating Behaviours and Attitudes of Australian Children**

Presenter: Diana Warren, Australian Institute of Family Studies, Australia

Co-author: Galina Daraganova, Australian Institute of Family Studies, Australia

**The Impact of Health Shocks on Employment and Financial Well-Being: A Comparative Analysis of European Welfare States**

Presenter: Jan Paul Heisig, WZB Berlin Social Science Center, Germany



**7F****09:00 – 10:30****PAPER SESSION: WELLBEING OF CHILDREN ROOM 16**

Chair: Lisbeth Loft, Columbia University, Institute for Social and Economic Research and Policy (ISERP), USA

**The Role of Economic Hardship and Parental Distress in Children's Socioemotional Development**

Presenter: Sandra Bohmann, DIW Berlin, Germany

**Trajectories of Student Well-being Throughout Secondary Education in Germany and Differences by Social Background**

Presenter: Max Herke, Martin-Luther-University Halle-Wittenberg, Germany

Co-authors: Katharina Rathmann, Hochschule Fulda, Germany; Matthias Richter, Martin-Luther-University Halle-Wittenberg, Germany

**The Effects of Childhood Language Ability on Mental Health in Adolescence and Adulthood: Analyses of 1970 British Cohort Study and Millennium Cohort Study Data**

Presenter: Emma Thornton, University of Liverpool, UK

Co-authors: Colin Bannard, University of Liverpool, UK; Praveetha Patalay, UCL Institute of Education, UK; Danielle Matthews, University of Sheffield, UK

**The Social Determinants of Young People's Bed and Rest Routines: Findings from the WISERD Education Multi-Cohort Study**

Presenter: Rhian Barrance, Cardiff University, UK

Co-author: Jennifer Hampton, Cardiff University, UK

**The Socio-Economic Gradient in Young Children's Wellbeing at School**

Presenter: Lisbeth Loft, Columbia University, Institute for Social and Economic Research and Policy (ISERP), USA

Co-author: Jane Waldfogel, Columbia University School of Social Work, USA

**7G****09:00 – 10:30****PAPER SESSION: PREMATURE MORTALITY ROOM 17**

Chair: Meg Fluharty, University College London, UK

**Migration to Scottish New Towns and the Impact on Premature Mortality in Glasgow: Longitudinal Analysis of Linked Scottish Mental Survey 1947 and NHS Central Register Data**

Presenter: Lynne Forrest, University of Edinburgh, UK

Co-authors: Chris Dibben, Zhiqiang Feng, Ian Deary, University of Edinburgh, UK; Frank Popham, University of Glasgow, UK

**Childhood Status Hierarchies and the Risk of Premature Death: A 65-Year Prospective Study of a 1953 Birth Cohort**

Presenter: Bitte Modin, Stockholm University, Sweden

Co-authors: Ylva B. Almquist, Viveca Östberg, Stockholm University, Sweden

**Adverse Childhood Experiences, Premature All-Cause and Cause-Specific Mortality: Findings from the Irish Longitudinal Study on Ageing**

Presenter: Mark Ward, Economic Social Research Institute, Ireland

Co-authors: Anne Nolan, Economic Social Research Institute, Ireland; Rose Anne Kenny, Trinity College Dublin, Ireland

**Socioeconomic Inequalities in Premature Mortality Across Adulthood from 1989 to 2016: Findings from Three British Birth Cohorts Born in 1946, 1958, and 1970**

Presenter: Meg Fluharty, University College London, UK

Co-authors: Rebecca Hardy, George B. Ploubidis, David Bann, University College London, UK; Will Johnson, Loughborough University, UK; Bennedetta Pongiglione, Bocconi University, Italy

**7H****09:00 – 10:30****PAPER SESSION: IMMIGRATION AND MIGRATION ROOM 21***Chair: Raimund Haindorfer, University of Vienna, Austria***Becoming Adult in Spain: Wellbeing and Networks of Support for the Social Inclusion of Unaccompanied Immigrant Youth***Presenter: Xavier Alarcón-Galindo, University of Girona, Spain**Co-author: Óscar Prieto-Flores, University of Girona, Spain***From Aspirations to Attainment: Class Background, Mental Health and the Labour Market Integration of Young Syrian Refugees in Germany***Presenter: Hans Dietrich, Institute for Employment Research (IAB), Germany***Patterns of Integration and Life Satisfaction Among Refugees in Vienna***Presenter: Raimund Haindorfer, University of Vienna, Austria**Co-authors: Bernd Liedl, Bernhard Kittel, University of Vienna, Austria***7I****09:00 – 10:30****PAPER SESSION: WAR AND HEALTH ROOM 22***Chair: Presenter: Meena Kumari, University of Essex, UK***The Long-arm of a War-torn Childhood: The Pathways Through Which Childhood Exposure to Conflict Affects Self-Rated Health in Later life***Presenter: Daniel Ramirez, Pennsylvania State University, USA**Co-author: Steven A. Haas, Pennsylvania State University, USA***The Legacy of the Northern Ireland 'Troubles': Mental Health in a Post Conflict Older Population***Presenter: Sharon Cruise, Queen's University Belfast, UK**Co-authors: Hannah McKenna, Ian Young, Frank Kee, Dermot O'Reilly, Queen's University Belfast, UK***Has the 30 Years of Civil Unrest in Northern Ireland (The Troubles) Affected Drinking Patterns of Older Adults?***Presenter: Hannah McKenna, Queen's University Belfast, Ireland**Co-authors: Dermot O'Reilly, Queen's University Belfast, UK; Sharon Cruise, Queen's University Belfast, UK***10:30 – 11:00 COFFEE BREAK FOYER 2****11:00 – 12:00 KEYNOTE PRESENTATION ROOM H 04****Life Courses and Social Inequality: Comparative Perspectives***Presenter: Karl Ulrich Mayer, Max Planck Institute for Human Development, Germany**Chair: Ingrid Schoon, UCL Institute of Education, UK***12:00 – 12:30 COFFEE BREAK FOYER 2**

## PARALLEL SESSION 8

### 8A

12:30 – 14:00

#### SYMPOSIUM ROOM 12

##### **Pathways, Decisions and Outcomes of Highly Skilled Workers**

Convenor and Chair: Kolja Briedis, German Centre for Higher Education and Science Studies (DZHW), Germany

##### **Exploring Trajectories of Doctoral Candidates in Germany**

Presenter: Gesche Brandt, DZHW, Germany  
Co-author: Susanne de Vogel, DZHW, Germany

##### **Health, Academic Self-Efficacy and Career Goals of Doctoral Candidates in Germany**

Presenter: Janine Lange, DZHW, Germany  
Co-author: Andreas Sarceletti, DZHW, Germany

##### **PhD Outcomes in the UK: Exploring Entry into Academic Employment**

Presenter: Sally Hancock, University of York, UK

##### **Does a Doctoral Degree (Still) Pay Off? Changing PhD-Wage-Gaps in the Last Decade**

Presenter: Thorsten Euler, DZHW, Germany  
Co-author: Fabian Trennt, DZHW, Germany

### 8B

12:30 – 14:00

#### SYMPOSIUM ROOM H 04

##### **The Social and Economic Consequences of Health**

Convenor and Chair: Alice Sullivan, University College London, UK

##### **Do Parental and Childhood Mental and Physical Health Influence School Attainment? Evidence from the 1970 and 2000 Birth Cohorts**

Presenter: Alice Sullivan, University College London, UK  
Co-authors: Samantha Parsons, Emla Fitzsimons, George Ploubidis, University College London, UK

##### **The Economic and Social Value of Midlife Mental Health: Evidence from the 1958 British Birth Cohort**

Presenter: George B. Ploubidis, University College London, UK  
Co-authors: Vanessa Moulton, David Bann, Alex Bryson, Gabriella Conti, Alice Sullivan, University College London, UK

##### **Effects of Body Mass Index on Relationship Status, Social Contact, and Socioeconomic Position: Mendelian Randomization Study in UK Biobank**

Presenter: Amanda Hughes, University of Bristol, UK  
Co-authors: Laura D. Howe, University of Bristol, UK; Roshni Kanayalal, Robin Beaumont, Tim Frayling, Samuel Jones, Andrew Wood, Jessica Tyrrell, University of Exeter Medical School, UK; Alisha Davies, Public Health Wales, UK; Sean Harrison, University of Bristol, UK; Franco Sassi, Imperial College Business School, London, UK

##### **For Better, But Maybe Not for Worse! The Effects of Health on the Quality of Household Relationships**

Presenter: Harish Kumar, Loughborough University, UK  
Co-authors: Paul Downward, Simona Rasciute, Loughborough University, UK

##### **Does Childhood Obesity Hinder Social Capital Development? A Review of Evidence and Analysis of Data from Three UK Cohorts**

Presenter: Alexa Segal, Imperial College Business School London, UK  
Co-authors: Carmen Huerta, Franco Sassi, Imperial College Business School London, UK

**Discussant:** David Finch, The Health Foundation, UK

## 8C

12:30 – 14:00

## SYMPOSIUM ROOM 13

**Ageing and Well-Being: Future Directions***Convenor and Chair: Noriko Cable, University College London, UK***Future Projection of the Health and Functional Status of Older People in Japan: A Pseudo-Panel Microsimulation Model***Presenter: Megumi Kasajima, University of Tokyo, Japan**Co-authors: Hideki Hashimoto, University of Tokyo, Japan; Sze-Chuan Suen, University of Southern California, USA; Brian Chen, University of South Carolina, USA; Karen Eggleston, Stanford University, USA; Jay Bhattacharya, Stanford School of Medicine, USA***Biological Costs and Benefits of Social Relationships for Men and Women Early, Mid and Late Adulthood: The Role of Partner, Family and Friends***Presenter: Patrick Rouxel, CMI, University of Manchester, UK**Co-author: Tarani Chandola, CMI, University of Manchester, UK***Understanding the Pictures of Social Relationships and Ageing Well-being Across Ageing Nations (SWAN): UK-Japan SWAN Project***Presenter: Noriko Cable, University College London, UK**Co-authors: Urszula Tomoszuk, Royal College of Music and Imperial College London, UK; Tarani Chandola, University of Manchester, UK; Kaori Honjo, Osaka Medical University, Japan; Hideki Hashimoto, University of Tokyo, Japan; Brian Beach, UK International Longevity Centre, UK***Discussant:** *Tarani Chandola, University of Manchester, UK*

## 8D

12:30 – 14:00

## PAPER SESSION: NEWS FROM THE LAB - NEW STUDIES ROOM 14

*Chair: Antonia Verstappen, University of Auckland, New Zealand***Monitoring Young Lifestyles (MyLife): Introduction of a New Longitudinal Study of Adolescent Substance Use***Presenter: Geir Brunborg, Norwegian Institute of Public Health, Norway**Co-author: Jasmina Burdzovic Andreas, Norwegian Institute of Public Health, Norway***20 Years Apart, Two Birth Cohort Studies in Québec (Canada): Key Findings on the First Edition and Orientations Regarding the Second Edition***Presenter: Nancy Illick, Institut de la statistique du Québec, Canada**Co-author: Hélène Desrosiers, Institut de la statistique du Québec, Canada***The Australian Longitudinal Study on Male Health: Cohort Profile and Cohort Reconciliation***Presenter: Dinusha Bandara, Australian Institute of Family Studies, Australia**Co-authors: Galina Daraganova, Karena Jessup, Australian Institute of Family Studies, Australia***The Medical Schools Outcomes Database (MSOD) and Longitudinal Tracking Project: Achieving a Sustainable Health Workforce for New Zealand***Presenter: Antonia Verstappen, University of Auckland, New Zealand**Co-authorS: Craig Webster, Phillippa Poole, University of Auckland, New Zealand; Joy Rudland, University of Otago, New Zealand*

## 8E

12:30 – 14:00

## PAPER SESSION: FAMILY ROOM 15

*Chair: Sarah Hayford, The Ohio State University, USA***Labor Market Deregulation, Fixed-Term-Employment and Family Formation in the Life-Course: A Comparison of Germany and the UK***Presenter: Christian Schmitt, Rostock University, Germany***Does the Maternal Separation Anxiety at 1 Year Influence Outcomes at 2 Years? Results from the 'All Our Families' Cohort***Presenter: Suzanne Tough, University of Calgary, Canada**Co-authors: Erin Hetherington, Funmi Olaye, Jessica-Lynn Walsh, University of Calgary, Canada; Sheila McDonald, Alberta Health Services, Canada*

**Desired Fertility and Migration Aspirations: Comparative Results from Three High-Migration Contexts**

Presenter: Melissa Alcaraz, Ohio State University, USA

Co-authors: Sarah R. Hayford, Ohio State University, USA; Jennifer E. Glick, Pennsylvania State University, USA

**Family Migration Context and Adolescent Family Formation Expectations: Comparative Evidence from Three High-Migration Settings**

Presenter: Sarah Hayford, The Ohio State University, USA

Co-authors: Monica Grant, University of Wisconsin, USA; Jennifer Glick, Pennsylvania State University, USA

**8F**

**12:30 – 14:00**

**PAPER SESSION: SUBJECTIVE HEALTH ROOM 16**

Chair: Monica Kirkpatrick Johnson, Washington State University, USA

**Perception of Material Situation and its Association with Self-Rated Health: A Fixed Effects Analysis of Changes Over the Life Course**

Presenter: Anja Knöchelmann, Martin-Luther-University Halle-Wittenberg, Germany

Co-authors: Nico Seifert, TU Kaiserslautern, Germany; Sebastian Günther, Irene Moor, Matthias Richter, Martin-Luther-University Halle-Wittenberg, Germany

**Poverty Dynamics and Subjective Health: New Evidence from Fixed Effects Models with Individual Health Trajectories?**

Presenter: Nico Seifert, TU Kaiserslautern, Germany

Co-authors: Anja Knöchelmann, Matthias Richter, Martin Luther University Halle-Wittenberg, Germany

**The Spillovers Between Joint Family and Work Trajectories and Multidimensional Wellbeing**

Presenter: Chiara Comolli, University of Lausanne, Switzerland

Co-authors: Laura Bernardi, Marieke Voorpostel, University of Lausanne, Switzerland

**8G**

**12:30 – 14:00**

**PAPER SESSION: LONELINESS AND HEALTH ROOM 17**

Chair: Michelle Kelly-Irving, INSERM, Université Toulouse III Paul Sabatier, France

**Social Isolation, Loneliness and Engagement with the National Health Service: A Latent Class Approach Using Survey Data Linked to Administrative Health Data**

Presenter: Elaine Douglas, University of Stirling, UK

Co-author: David Bell, University of Stirling, UK

**Generational Differences in Loneliness and its Psychological and Sociodemographic Predictors in the UK**

Presenter: Drew Altschul, University of Edinburgh, UK

Co-authors: Matthew Iveson, Ian Deary, University of Edinburgh, UK

**The Longitudinal Association of Perceived Neighbourhood Disorder and Lack of Social Cohesion with Depression Among Older Adults: An Individual Participant Data Meta-Analysis from 16 High-Income Countries**

Presenter: Gergő Baranyi, University of Edinburgh, UK

Co-authors: Jamie Pearce, Chris Dibben, University of Edinburgh, UK; Stefan Sieber, Stéphane Cullati, Swiss NCCR LIVES, University of Geneva, Switzerland; Delphine S. Courvoisier, University of Geneva, Switzerland

**8H****12:30 – 14:00****PAPER SESSION: SELF-RATED HEALTH ROOM 21***Chair: Janet Spittlehouse, University of Otago, New Zealand***Pathways from Early Childhood to Physical and Emotional Well-Being and Cognitive Function in Mid-Life***Presenter: Brian Dodgeon, University College London, UK**Co-authors: Richard D. Wiggins, Praveetha Patalay, George B. Ploubidis, University College London, UK***Midlife Cognitive Function in Groups of People with Different Longitudinal Trajectories of Affective Symptoms***Presenter: Darya Gaysina, University of Sussex, UK**Co-authors: Amber John, Urvisha Patel, Jennifer Rusted, University of Sussex, UK; Sarah-Naomi James, Marcus Richards, MRC Unit for Lifelong Health and Ageing, University College London, UK***Air Pollution and Health in the Older Population: Evidence from the Irish Longitudinal Study on Ageing (TILDA)***Presenter: Anne Nolan, Economic and Social Research Institute, Ireland**Co-authors: Philip Carthy, Sean Lyons, Economic and Social Research Institute, Ireland***Sexual Orientation and Mental Health Over the Life Course in a Birth Cohort***Presenter: Janet Spittlehouse, University of Otago, New Zealand**Co-authors: Joseph M. Boden, John Horwood, University of Otago, New Zealand***8I****12:30 – 14:00****PAPER SESSION: HEALTH AND MORTALITY ROOM 22***Chair: Claudio Barbiellini Amidei, University of Padua, Italy***Adult Children's Education and Parent Mortality: Exploring Mechanisms***Presenter: Shawn Bauldry, Purdue University, USA**Co-author: Joseph D. Wolfe, University of Alabama at Birmingham, USA***Cause-Specific Mortality After Non-Traumatic Spinal Cord Injury: Results from a Longitudinal Cohort Study in Switzerland***Presenter: Anne Buzzell, Swiss Paraplegic Research, Switzerland**Co-authors: Jonviea Chamberlain, Martin Brinkhof, Swiss Paraplegic Research, Switzerland; Marcel Zwahlen, Institute of Social and Preventive Medicine Bern, Switzerland***Mortality Differentials Between Traumatic and Non-Traumatic Spinal Cord Injury: A Causal Inference Approach***Presenter: Martin Brinkhof, Swiss Paraplegic Research, Switzerland**Co-authors: Anne Buzzell, Jonviea Chamberlain, Swiss Paraplegic Research, Switzerland***A Longitudinal Study of Health-Related Trends, in a Population-Based E-Cohort with Updated Follow-Up of All Residents in Venice (2000 – 2014)***Presenter: Claudio Barbiellini Amidei, University of Padua, Italy**Co-authors: Silvia Macciò, Francesca Gessoni, Andrea Bardin, Federica Turatto, Lorenzo Simonato, University of Padua, Italy***14:00 – 15:00****LUNCH****MENSA VIA FOYER 1****15:00****CONFERENCE END**





## **Society for Longitudinal and Lifecourse Studies (SLLS)**

### **Registered Office Address**

UCL Institute of Education, 20 Bedford Way, London, WC1H 0AL, United Kingdom

### **Correspondence Address**

6 New Exeter Street, Chudleigh, Newton Abbot, Devon, TQ13 0DB, United Kingdom

### **Telephone**

+44 (0)1626 683101

### **Email**

info@slls.org.uk

### **SLLS Website**

www.slls.org.uk

### **SLLS Conference Website**

www.sllsconference.com

The SLLS is a Registered UK Charity: Number 1144426



#SLLS2019

## **Longitudinal and Life Course Studies (LLCS) International Journal**

### **Websites**

(Volumes 1 – 8) [www.llcsjournal.org](http://www.llcsjournal.org)

(Volumes 9+) [www.bristoluniversitypress.co.uk/journals/longitudinal-and-life-course-studies](http://www.bristoluniversitypress.co.uk/journals/longitudinal-and-life-course-studies)



## **SLLS Membership**

Student, ordinary and corporate memberships available

### **Website:**

[www.ebiz.turpin-distribution.com/products/374222-society-for-longitudinal-and-life-course-studies-slls-membership-and-llcs-journal.aspx](http://www.ebiz.turpin-distribution.com/products/374222-society-for-longitudinal-and-life-course-studies-slls-membership-and-llcs-journal.aspx)